



Figure 1 *S. litura* on cotton leaf



Figure 2 *S. litura* on cabbage leaf



Figure 3 *S. litura* on capsicum leaf



Figure 4 Global distribution of *Spodoptera litura*



Figure 5 Distribution of *Spodoptera litura* in Asia



Figure 6 Distribution of *Spodoptera litura* in India

(Source of the figure 4, 5 & 6: EPPO - European and Mediterranean Plant Protection Organization)



Figure 7 *S. litura* damaging cotton leaf



Figure 8 *S. litura* damaging banana  
plant



Figure 9 *S. litura* damaging tomato



Figure10 *S. litura* damaging cotton





Figure 11 Egg mass of *S. litura* covered with scales



Figure 12 Larval stage of *S. litura*



Figure 13 Pupal stage of *S. litura*



Figure 14 Male & female adults of *S. litura*



Figure 15 Life cycle of *Spodoptera litura*  
(Ramaiah et al., 2018)



Figure 16 Egg mass of *S. litura*



Figure 17 Spines at the posterior end of pupal stage in *S. litura*

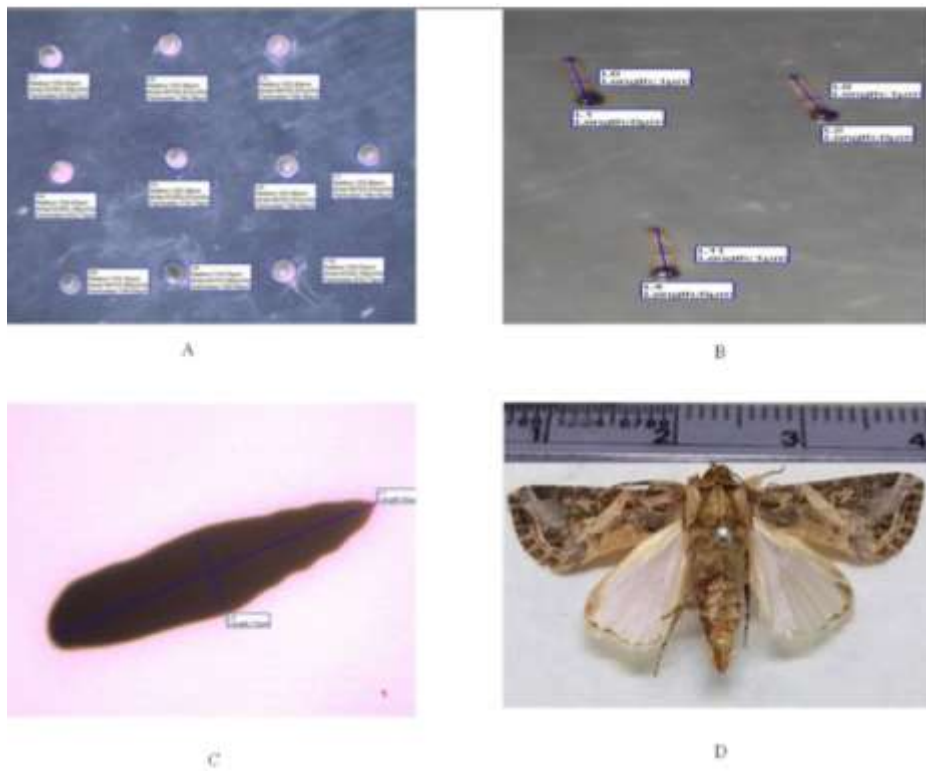


Figure 18 Morphometrics of *S. litura*





Figure 19 Tomato plant



Figure 20 Cabbage plant



Figure 21 Chili plant



Figure 22 Cotton plant





Figure 23 Castor field showing damage of the insect pest



Figure 24 Collection site of *S. litura* at Padra,



Figure 25 Insect pests observed at castor field

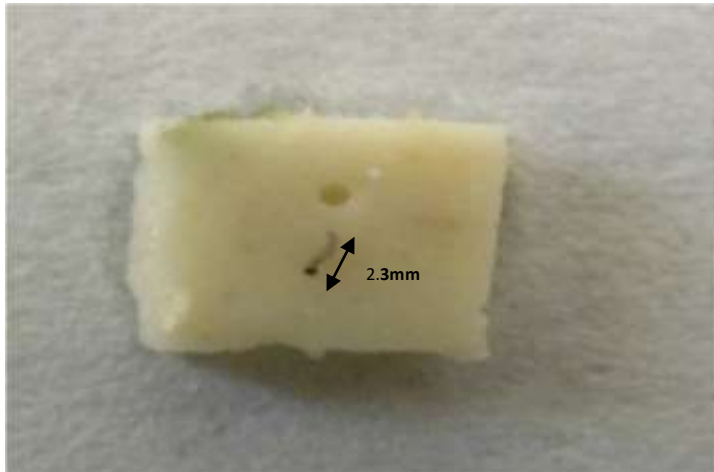


Figure 26 1<sup>st</sup> instar larva on artificial diet



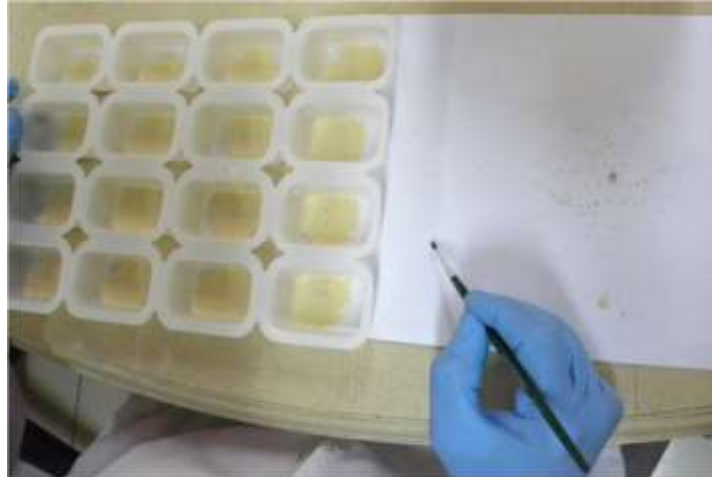


Figure 27 Transferring of neonates on artificial diet



Figure 28 2<sup>nd</sup> instar larva

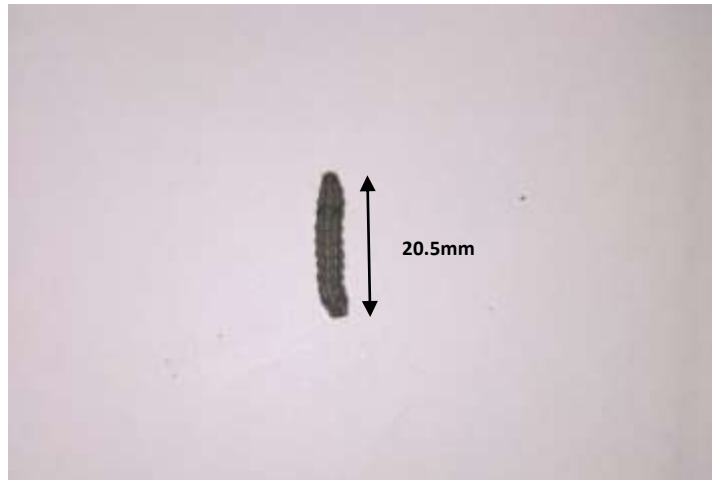


Figure 29 3<sup>rd</sup> instar larva



Figure 30 4<sup>th</sup> instar larva



Figure 31 Different stages of *S. litura* larva



Figure 32 Weighing of ingredients for diet preparation

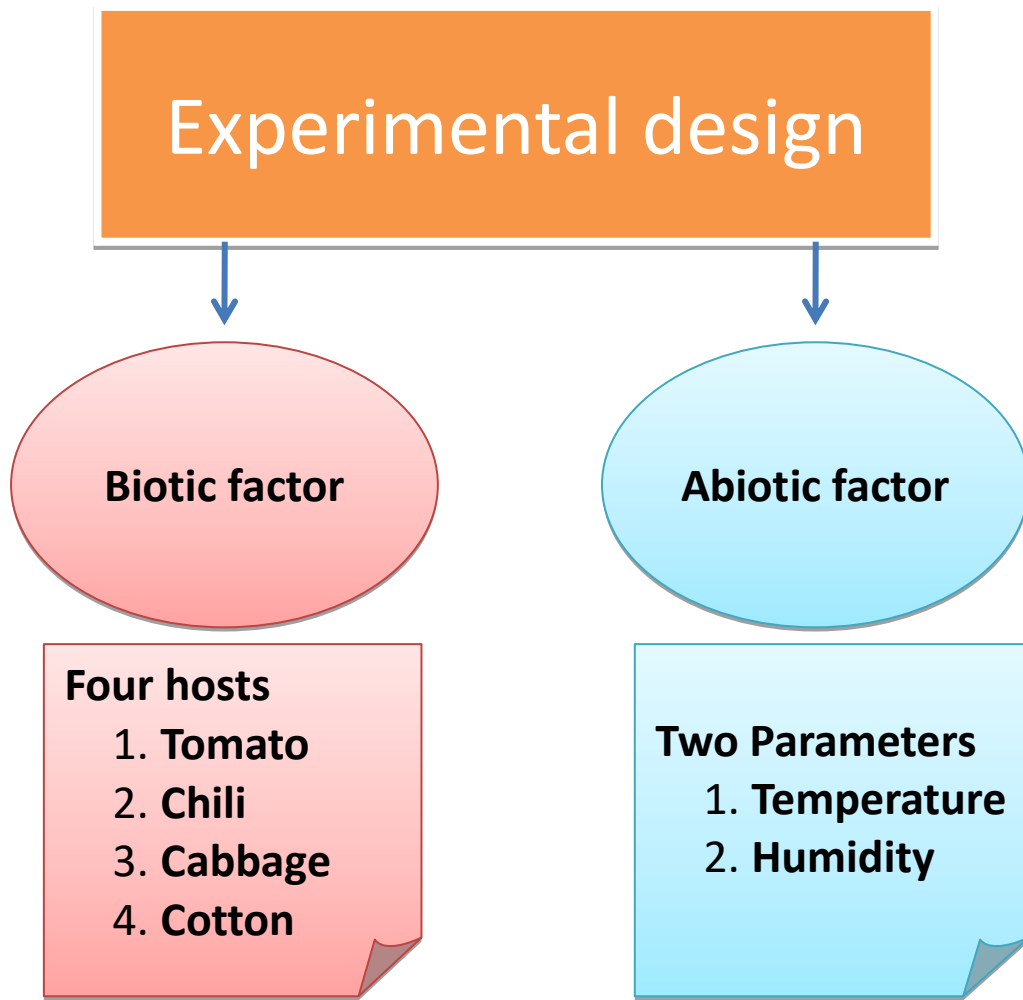


Figure 33 Experimental design



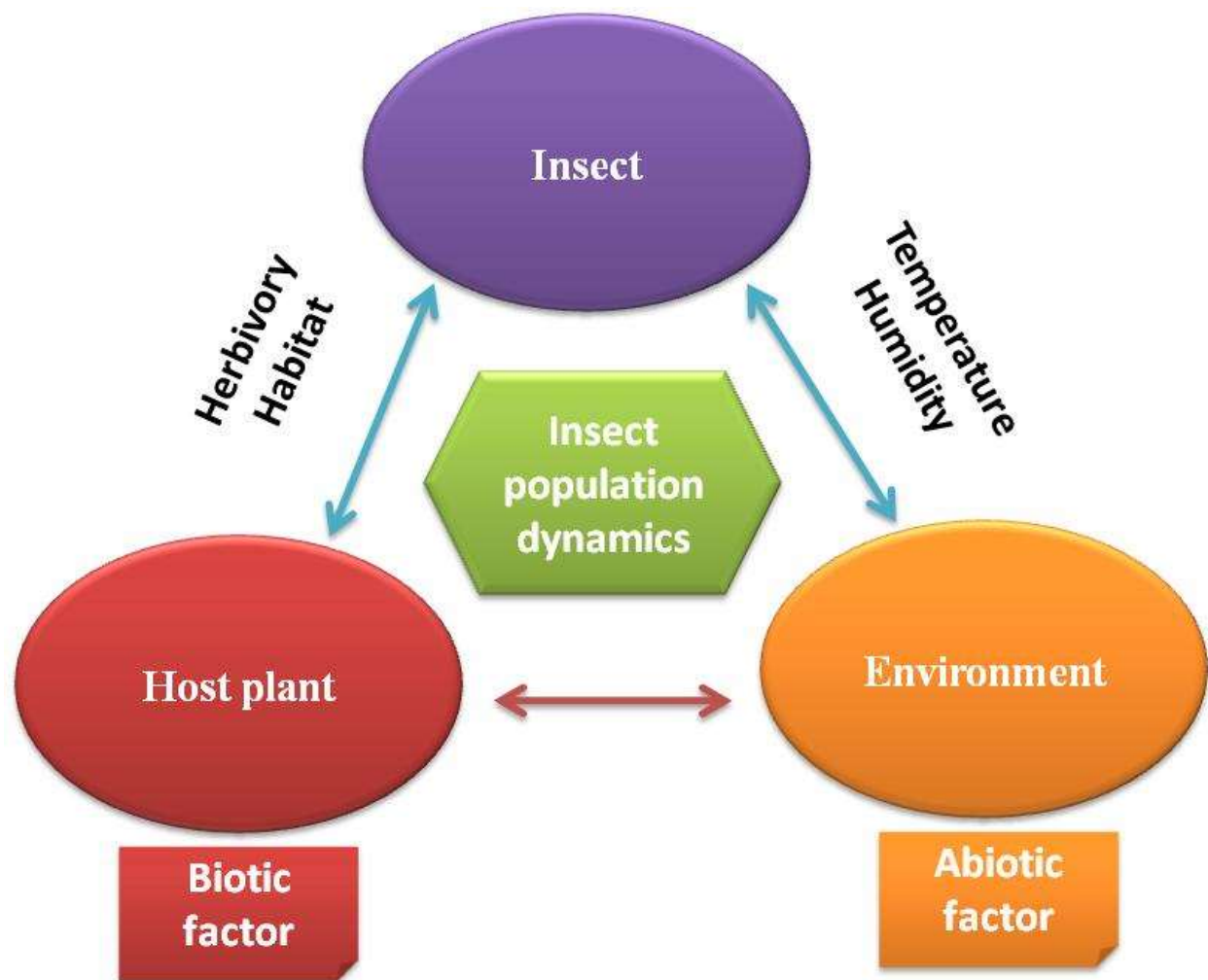


Figure 34 Interaction showing insect population dynamics

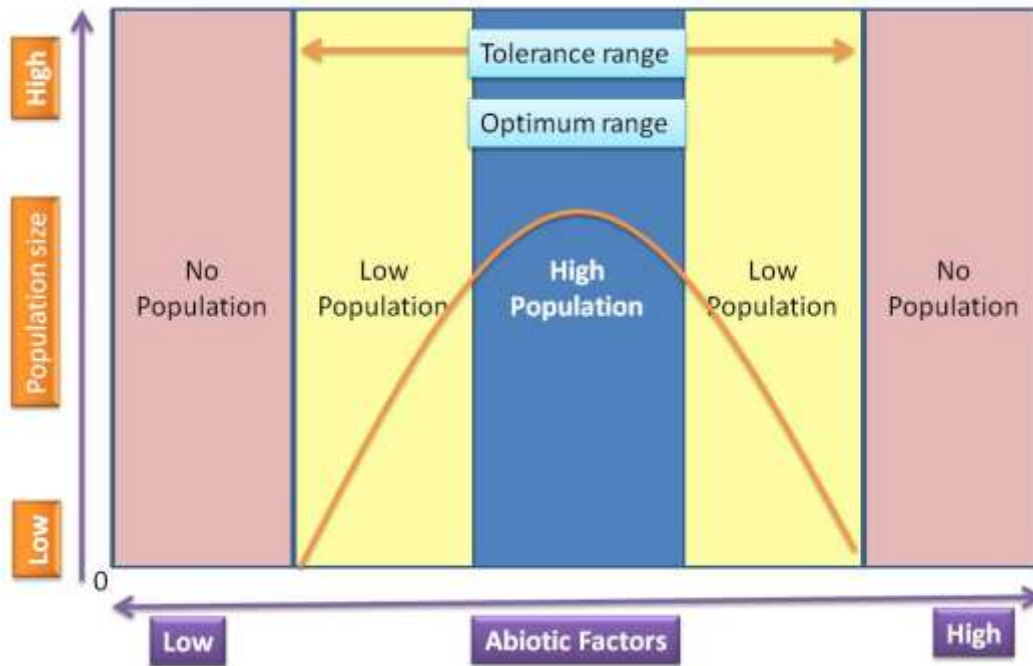


Figure 35 Interaction between abiotic factors and population size