

PICTURESQUE

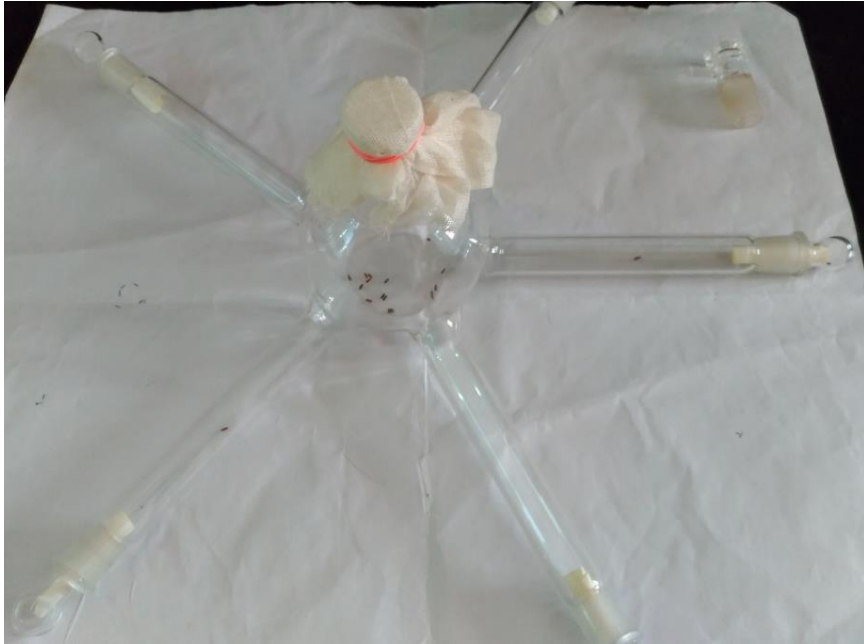


Figure 1: Accumulation of *T. castaneum* in the centre of the multi-arm olfactometer in response to the treatment

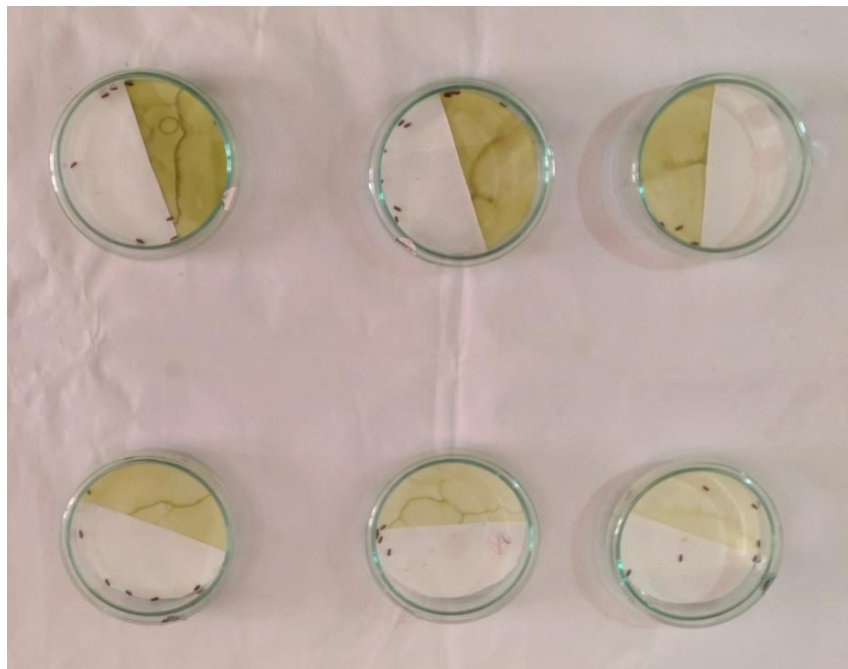


Figure 2: Gathering of *T. castaneum* in the control half during filter paper arena test

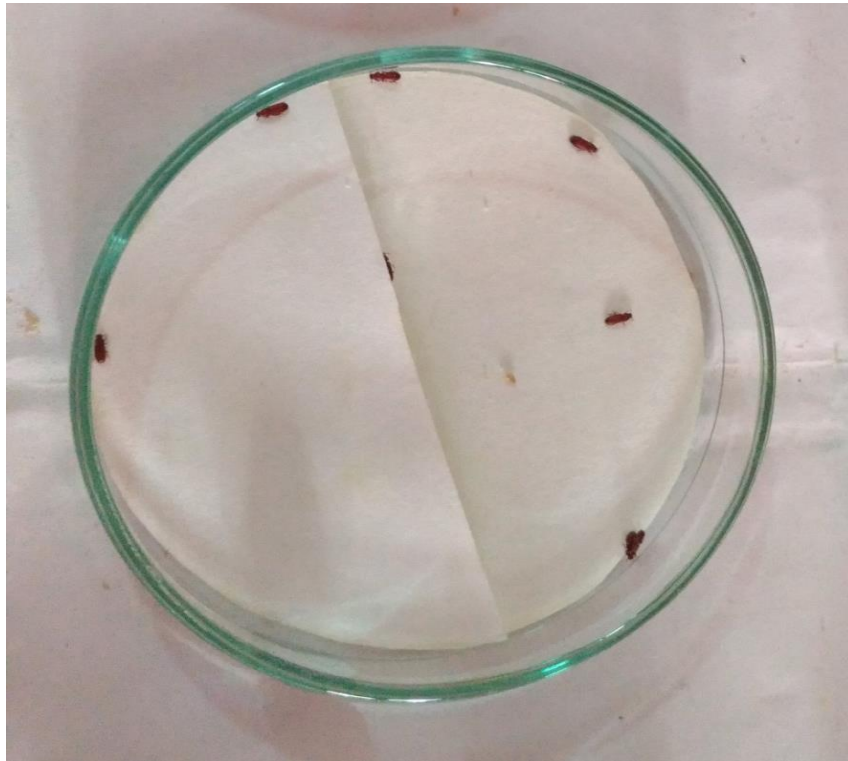


Figure 3: Free movement of the red flour beetle in the control set of filter paper arena test.



Figure 4: *T. castaneum* gathering in the underside of the control half of the filter paper



Figure 5: Heavily damaged wheat grains resulted from the three months of *T. castaneum* infestation



Figure 6: Minimal damage in the wheat grains when supplemented with the leaves of *A. annua* after three months of *T. castaneum* infestation



Figure 7: Complete damage of the healthy wheat grain.



Figure 8: Heavy infestation of the wheat grain



Figure 9: Unique trail made by *T. castaneum* in the wheat flour



Figure 10: Flour covered completely by the exuvia and insect fragments