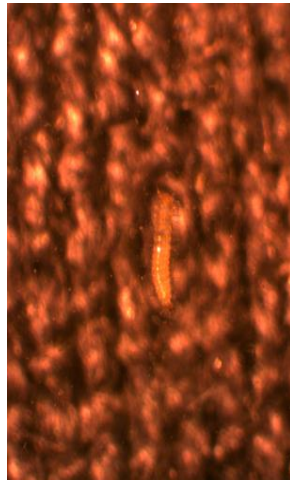


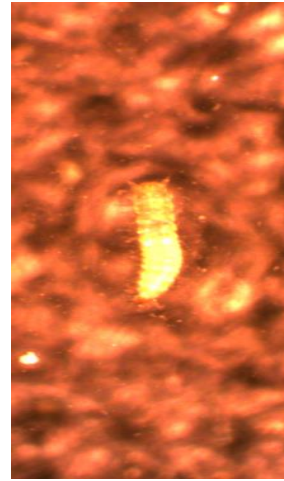
ANNEXURE



a. Egg



b. 1st



c. 2nd



d. 3rd



h. 7th



g. 6th



f. 5th



e. 4th



i. Pupa



k. Pupa-male



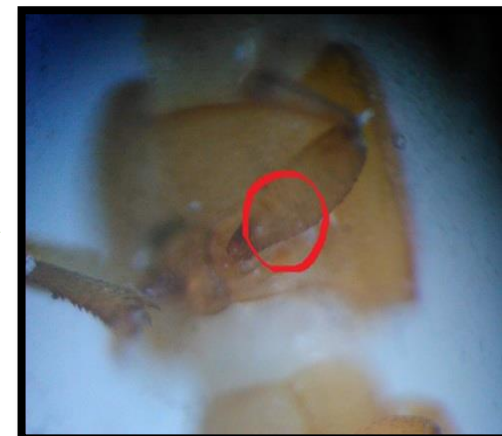
m. Adult male



j. Adult



l. Pupa- female



n. Adult female

Figure 1: Different stages of *Tribolium castaneum* captured using the computer assisted 13.1 mega pixel catcam stereomicroscope with fine details. **a:** egg, **b:** 1st instar, **c:** 2nd instar, **d:** 3rd instar, **e:** 4th instar, **f:** 5th instar, **g:** 6th instar, **h:** 7th instar, **i:** ventral view of pupal stage, **j:** ventral view of adult insect, **k:** male pupa where genital papilla is stubby, **l:** female pupa where genital papilla is forked reaching the urogomphi, **m:** male adult marked by the presence of setiferous patch on the forefemur, **n:** absence of setiferous patch in female adult.