

Figure 2.18: Photomicrograph of the representative Liver showing MNC infiltration. Arrow indicates central area of hepatocytes necrosis with mononuclear cell infiltration (H-E Staining, 100X, scale bar represents 100 μ m).

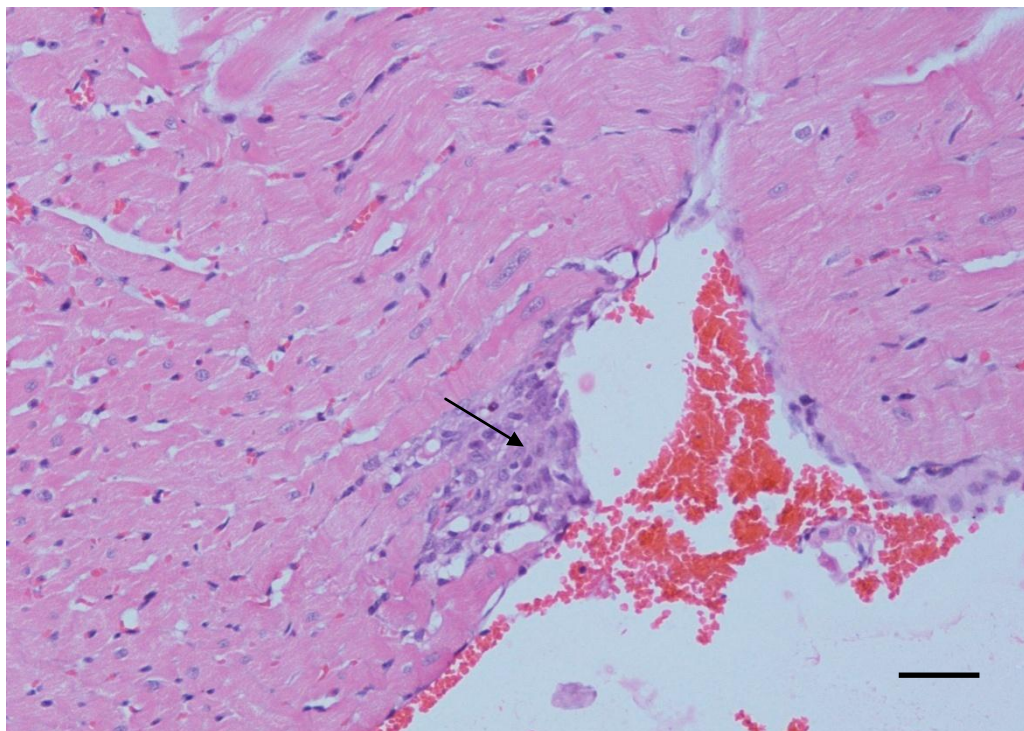


Figure 2.19: Photomicrograph of the representative Heart section showing degeneration. Arrow indicates degeneration of cardiomyocytes (H-E Staining, 100X, scale bar represents 100 μ m).

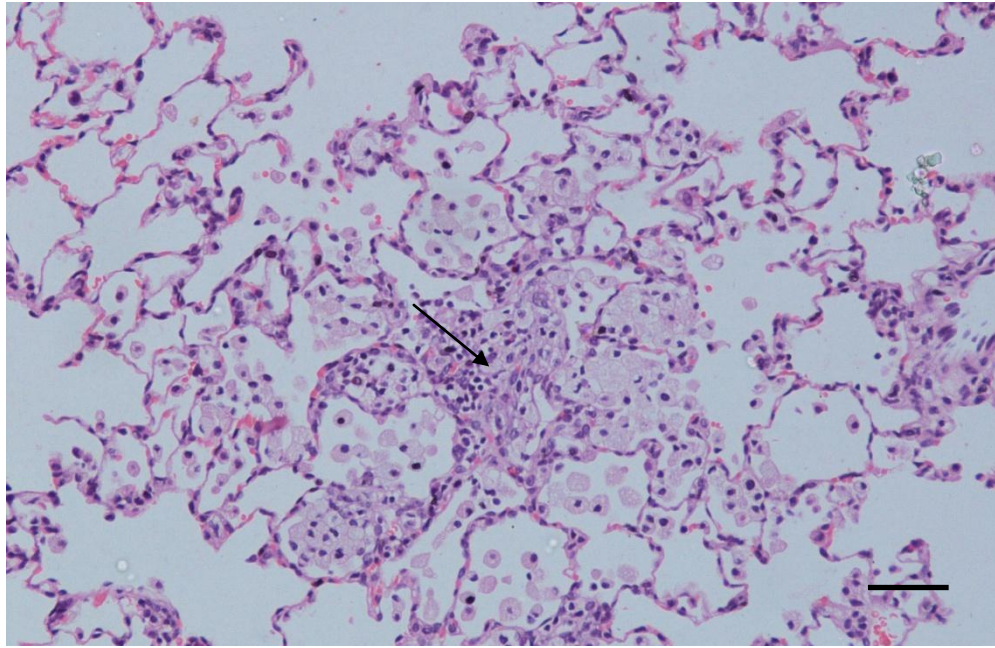


Figure 2.20: Photomicrograph of the representative Lung section showing foamy macrophages. Arrow indicates aggregation of foamy macrophages in alveolar spaces (H-E Staining, 100X, scale bar represents 100 μ m).

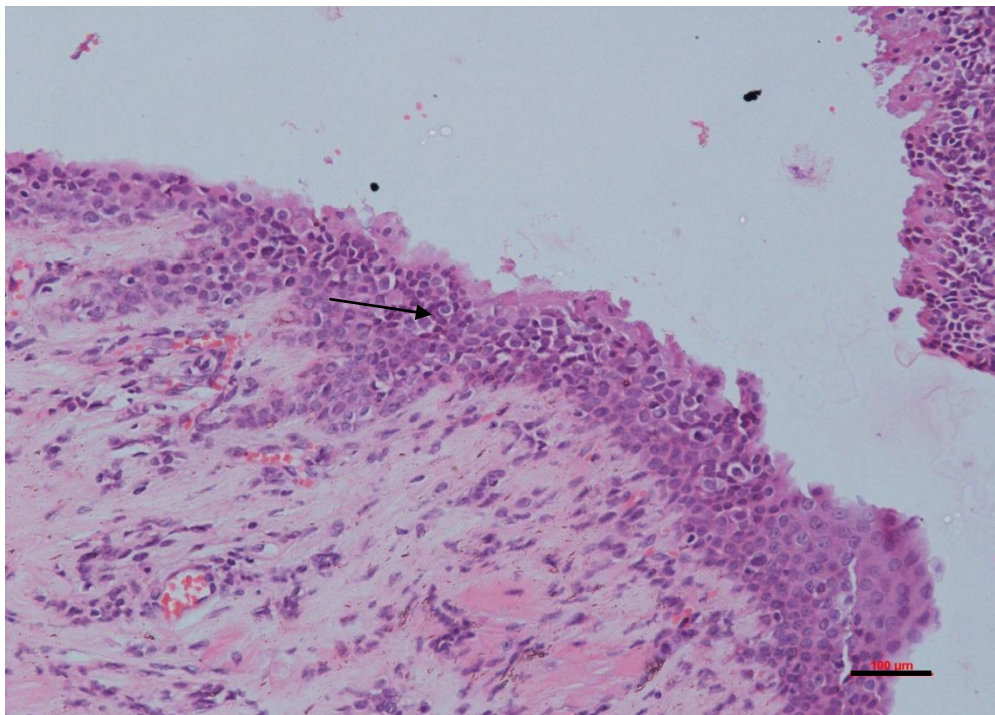


Figure 2.21: Photomicrograph of the representative Larynx section showing hyperplasia. Arrow indicates hyperplasia of respiratory epithelium (H-E Staining, 100X, scale bar represents 100 μ m).

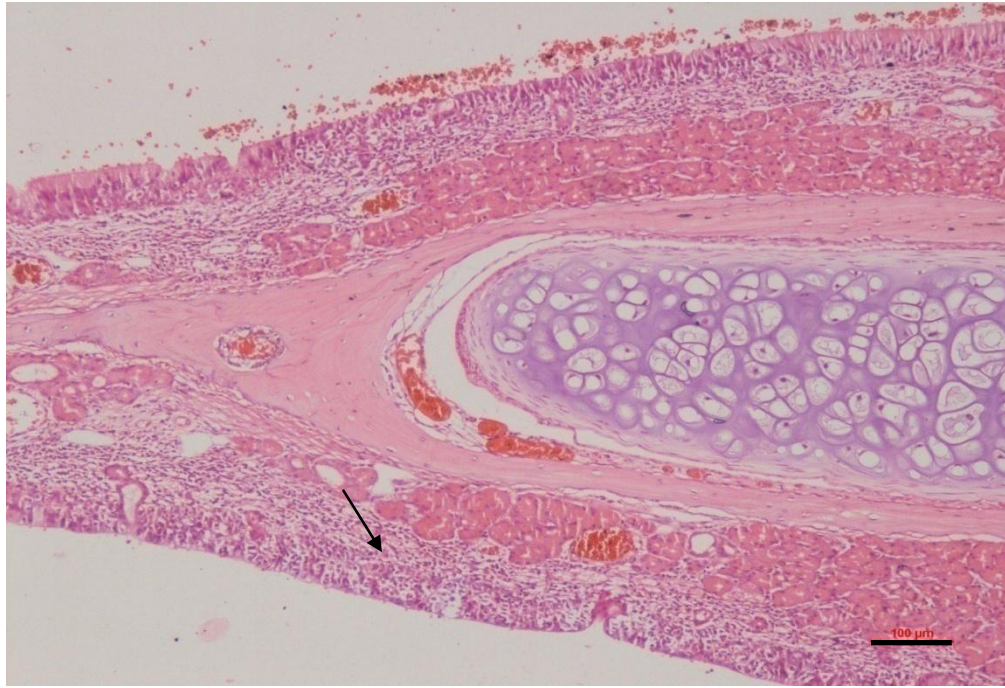


Figure 2.22: Photomicrograph of the representative Nasal Cavity section showing degeneration of respiratory epithelium. Arrow indicates degeneration and infiltration of inflammatory cell in respiratory epithelium (H-E Staining, 100X, scale bar represents 100µm).

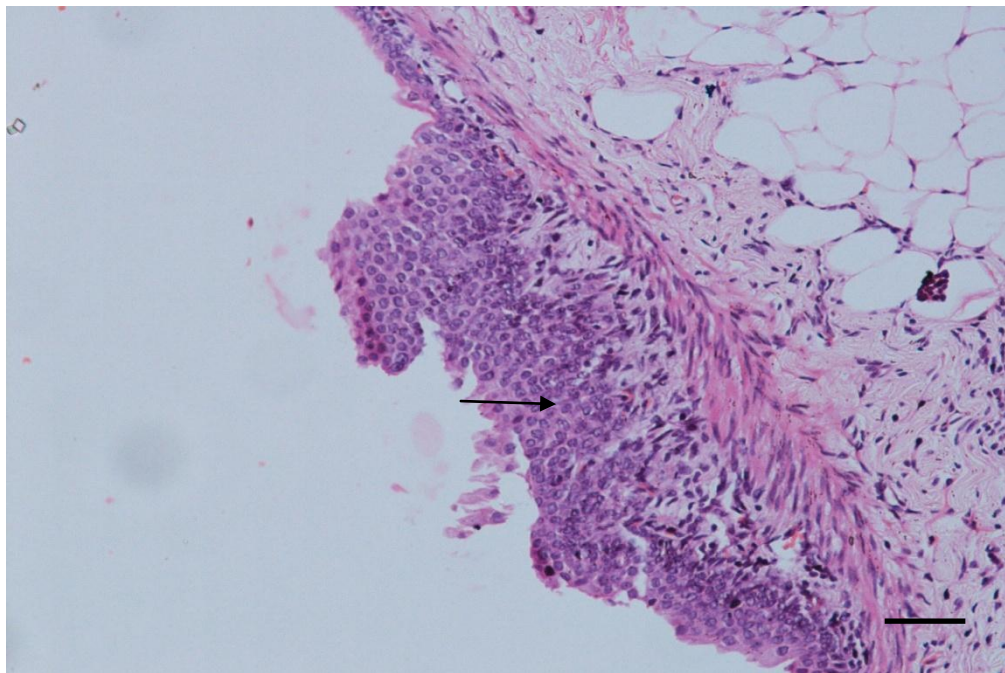


Figure 2.23: Photomicrograph of the representative Kidney section showing hyperplasia. Arrow indicates hyperplasia of urothelial epithelium in pelvis (H-E Staining, 200X, scale bar represents 50µm).