

APPENDIX III

SCORE CARD FOR PRODUCT EVALUATION

PANELIST NO. :

NAME :

PRODUCT :

DATE :

TIME :

- Given are the samples of trial to develop products at household level which may have health benefits
- Please grade the samples according to the instructions. Kindly follow the instructions mentioned on the questionnaire.

Signature

ORGANOLEPTIC EVALUATION

ATTRIBUTES	SAMPLE CODE				
	A	B	C	D	E
Color and Appearance					
Texture					
Taste & Mouth feel					
After taste					
Chewability					
Burn spots					
Breakability					
Cell Size					
Softness					
Overall acceptability					
Total score					

Note: Please grade the following samples by giving scores.

Minimum score - 0

Maximum score - 10

DIFFERENCE TEST

- You are given a reference sample (A) and other test samples to be compared with (A) individually
- Rate degree of difference in each sample according to the following scale

Scale:

Degree of difference

0	No difference
1	Very slight difference
2	Slight difference
3	Moderate difference
4	Large difference

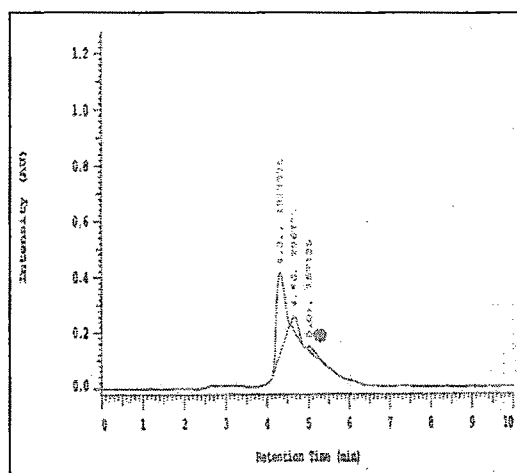
Direction of difference

1	Equal
2	Superior
3	Inferior

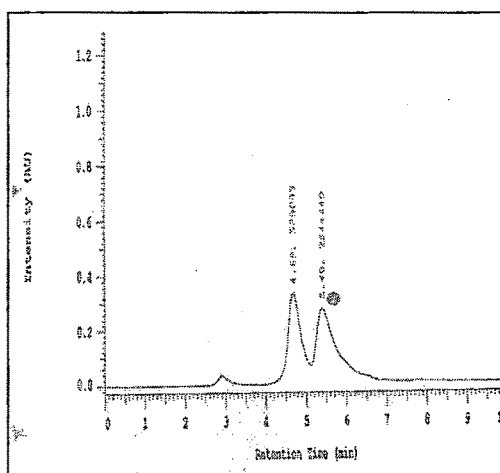
ATTRIBUTES	SAMPLE CODE				
	B	C	D	E	F
Color & Appearance					
Taste & mouth feel					
After taste					
Overall acceptability					

APPENDIX III

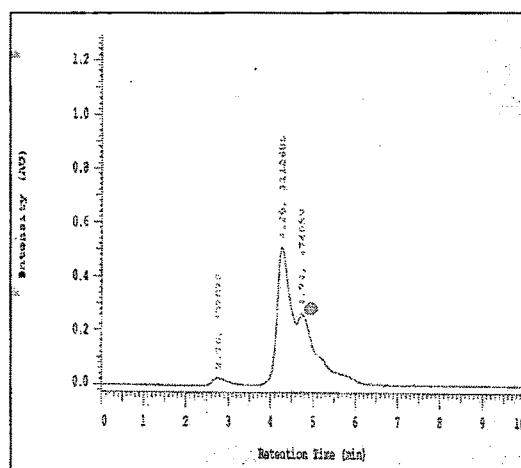
PEAKS OF FOS IN FOOD PRODUCTS USING HPLC TECHNIQUE



(a) *Chapati* without addition of FOS



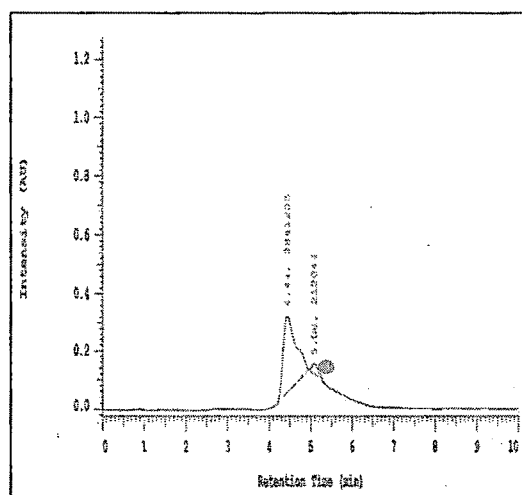
(b) *Chapati*^ with 6% FOS addition



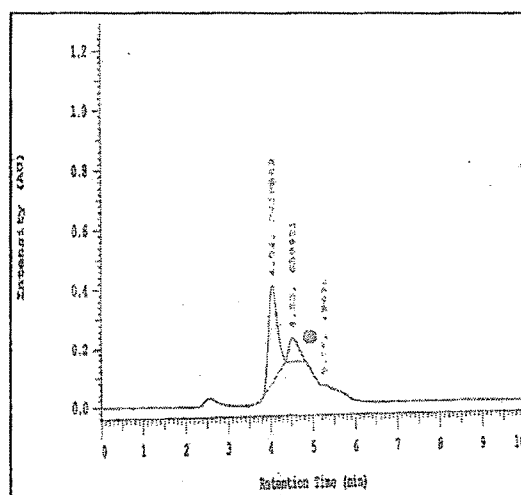
(c) *Chapati*^ with 20% FOS addition

I (a-c): Chromatograms depicting peak of FOS in *chapati*

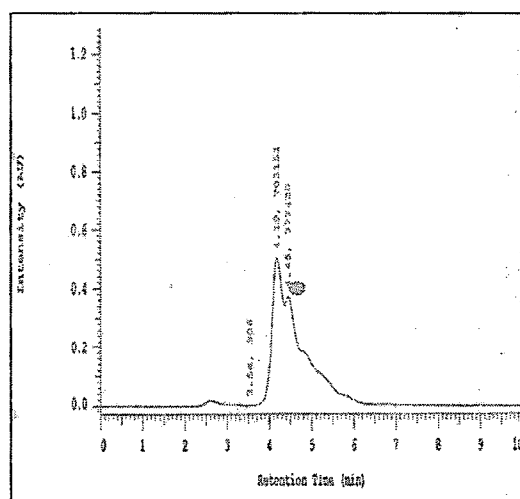
Note: ^ Processed *chapati*, ● FOS



(a) *Thepla* without addition of FOS



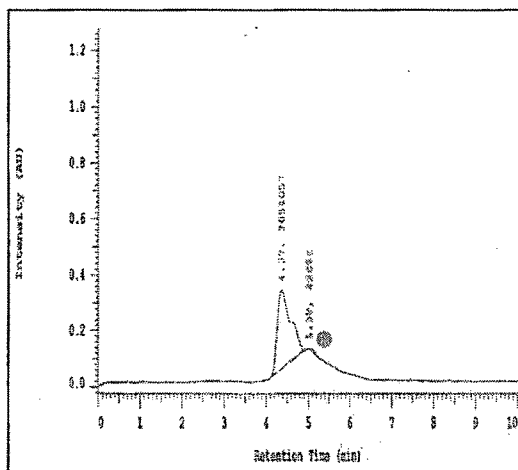
(b) *Thepla*[^] with 6% FOS addition



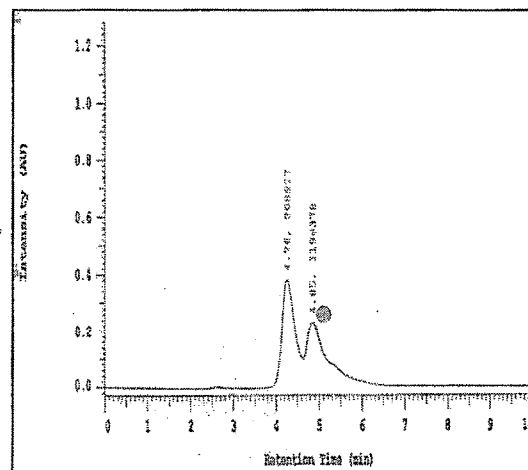
(c) *Thepla*[^] with 20% FOS addition

II (a-c): Chromatograms depicting peak of FOS in *thepla*

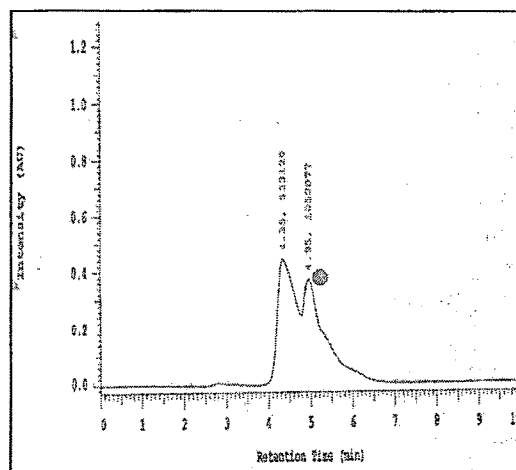
Note: [^] Processed *thepla*, ● FOS



(a) *Dhokla* without addition of FOS



(b) *Dhokla*^ with 6% FOS addition



(b) *Dhokla*^ with 20% FOS addition

III (a-c): Chromatograms depicting peak of FOS in *dhokla*

Note: ^Processed *dhokla*, ● FOS

