

CHAPTER-IV

DEMOGRAPHIC PROFILE OF THE RESPONDENTS

This chapter Analyses the primary data collected by the researcher from the NSS volunteers and Programme Officers from Universities Gujarat. The data containing to demographic details of the respondents is analyzed in this chapter. The chapter also represents the details of NSS volunteers and Programme officers such as family income, duration of experience with NSS.

4.1. RESPONSES OF NSS VOLUNTEERS

4.1.1. Gender of the NSS volunteers:

For the present study 350 volunteers associated with NSS for more than one year were selected as respondents. Respondents were selected from seven universities; each university represented 14.3 percent of the total respondents.

4.1.1. Distribution NSS volunteers based on their University and their Gender

Name of the University	Gender		Frequency	Percent
	M	F		
Gujarat University, Ahmedabad	28	22	50	14.3
Hemchandracharya North Gujarat University (HNGU), Patan	39	11	50	14.3
Krantiguru Shyamji Krishna Verma Kachchh University, Kachchh	18	32	50	14.3
Sardar Patel University, Vallabh Vidyanagar	44	6	50	14.3
Saurashtra University, Rajkot	4	46	50	14.3
The Maharaja Sayajirao University of Baroda, Vadodara	23	27	50	14.3
Veer Narmad South Gujarat University, Surat	34	16	50	14.3
Total	190	160	350	100.0

Gender of the respondents

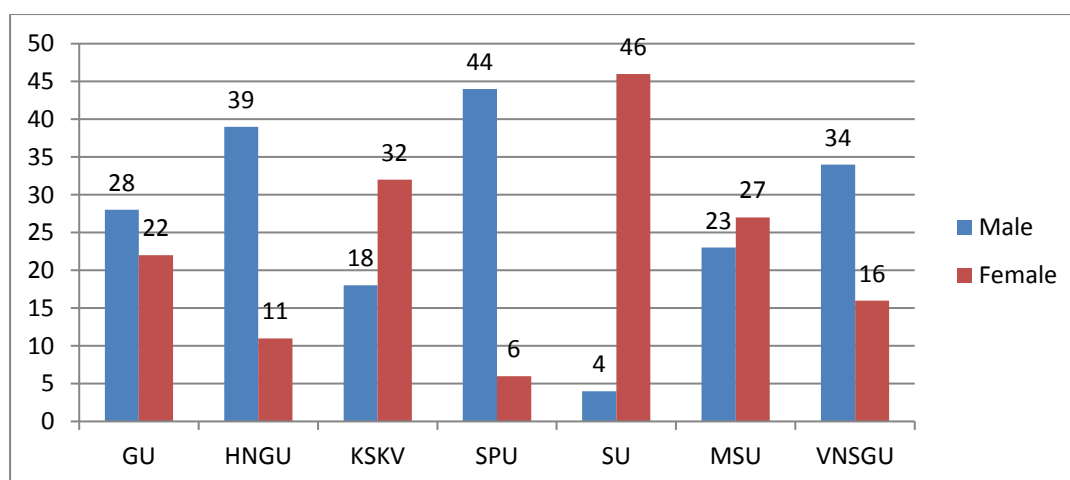
The sample of the study was comprised of 190 (54.28%) male respondents and 160 (45.71%) female respondents.

Male Volunteers

Out of 54.28 percent male respondents 8 percent were from Gujarat University, Ahmedabad. 11.14 percent were from Hemchandracharya North Gujarat University (NGU), Patan. 5.14 percent were from Krantiguru Shyamji Krishna Verma Kachchh University, Kachchh. 12.57 percent were from Sardar Patel University, Vallabh Vidyanagar. 1.14 percent male were from Saurashtra University, Rajkot. 6.57 percent male were from The Maharaja Sayajirao University of Baroda, Vadodara. 9.71 percent male were from Veer Narmad South Gujarat University, Surat.

Female Volunteers

Out of 45.71 percent female respondents 6.28 percent were from Gujarat University, Ahmedabad. 3.14 percent were from Hemchandracharya North Gujarat University (NGU), Patan. 9.14 percent were from Krantiguru Shyamji Krishna Verma Kachchh University, Kachchh. 1.71 percent were from Sardar Patel University, Vallabh Vidyanagar. 13.14 percent were from Saurashtra University, Rajkot. 7.71 percent were from The Maharaja Sayajirao University of Baroda, Vadodara. 4.57 percent were from Veer Narmad South Gujarat University, Surat.



The above data indicates that at large there is almost equal enrollment of boys and girls in NSS. When we segregate the data of different universities, it seems that in

the Gujarat University, Ahmedabad and The Maharaja Sayajirao University of Baroda, Vadodara there is almost equal enrollment of boys and girls. Whereas in Hemchandracharya North Gujarat University (NGU), Patan, Sardar Patel University, Vallabh Vidyanagar, and Veer Narmad South Gujarat University, Surat the enrollment of boys in NSS is quite more. It is also found that in Krantiguru Shyamji Krishna Verma Kachchh University, Kachchh and Saurashtra University, Rajkot enrollment of girls is more.

4.1.2. Age of the NSS volunteers:

Age of the respondents is an important demographic feature which has its impact on volunteers.

350 respondents were selected as a sample where in 46.28 percent of the NSS volunteers were falling in the age group of 17 to 19 years. 49.42 percent of the NSS volunteers were falling in the age group of 20 to 22 years. 46.28 percent of the NSS volunteers were falling in the age group of 17 to 19 years. Very less 4.28 percent of the NSS volunteers were falling in the age group of 23 to 25 years.

4.1.2. The table indicating the Age group of the respondents

University	Age			Total
	17-19	20-22	23-25	
Gujarat University, Ahmedabad	25	25	0	50
Hemchandracharya North Gujarat University, Patan	19	26	05	50
Krantiguru Shyamji Krishna Verma Kachchh University, Kachchh	36	14	00	50
Sardar Patel University, Vallabh Vidyanagar	22	22	06	50
Saurashtra University, Rajkot	30	20	00	50
The Maharaja Sayajirao University, Vadodara	09	38	03	50
Veer Narmad South Gujarat University, Surat	21	28	01	50
Total	162	173	15	350

From the above table it can be interpreted that

From Gujarat University, Ahmedabad 7.14 percent of the volunteers were from the age group of 17 to 19 years and 7.14 percent of the volunteers were from the age group of 20 to 22 years.

From Hemchandracharya North Gujarat University (HNGU), Patan 5.42 percent of the NSS volunteers were from the age group of 17 to 19 years. 7.42 percent of the volunteers were from the age group of 20 to 22 years and 1.42 percent were from the age group of 23 to 25 years.

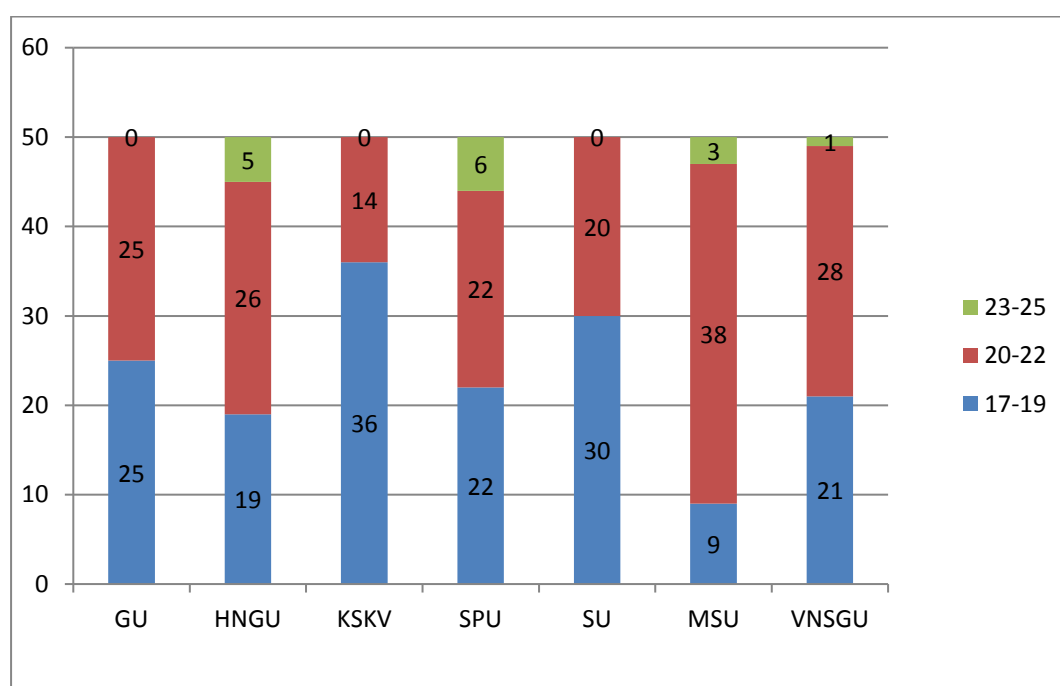
From Krantiguru Shyamji Krishna Verma Kachchh University, Kachchh 10.28 percent of the NSS volunteers were from the age group of 17 to 19 years and 4 percent of the volunteers were from the age group of 20 to 22 years.

From Sardar Patel University, Vallabh Vidyanagar 6.28 percent of the NSS volunteers were from the age group of 17 to 19 years. 6.28 percent of the volunteers were from the age group of 20 to 22 years and 1.76 percent were from the age group of 23 to 25 years.

From Saurashtra University, Rajkot 8.57 percent of the NSS volunteers were from the age group of 17 to 19 years. 5.71 percent of the volunteers were from the age group of 20 to 22 years.

From The Maharaja Sayajirao University (M. S. University), Vadodara 2.57 percent of the NSS volunteers were from the age group of 17 to 19 years. 10.85 percent of the volunteers were from the age group of 20 to 22 years and 0.85 percent were from the age group of 23 to 25 years.

From Veer Narmad South Gujarat University, Surat 6 percent of the NSS volunteers were from the age group of 17 to 19 years. 8 percent of the volunteers were from the age group of 20 to 22 years and 0.28 percent were from the age group of 23 to 25 years.



4.1.3. Religion of the NSS Volunteers:

The researcher has tried to study the participation of volunteers in NSS from different religious groups.

4.1.3. Table showing religion of the respondents

Religion	Gender		Frequency	Percent
	M	F		
Hindu	182	157	339	96.9
Muslim	08	03	11	03.1
Total	190	160	350	100

96.9 percent of respondents were from Hindu religion and 3.1 were from Muslim religion. When we look at the gender it can be analyzed that from the total respondents 52 percent male respondents were Hindu, where as 2.28 percent were Muslim. From the total respondents 44.85 percent female respondents were Hindu, where as 0.85 percent were Muslim.

From the above data it is analyzed that there is almost equal participation of male and female students in NSS from Hindu and Muslim religion.

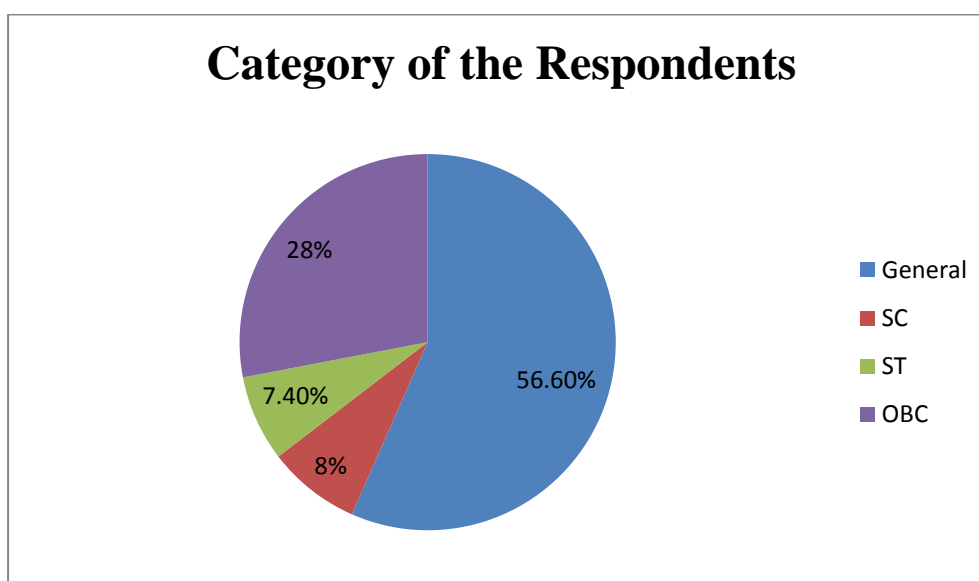
4.1.4. Caste of NSS Volunteers:

4.1.4. The table sights the Category of the respondents

Category	Gender		Frequency	Percent
	M	F		
General	96	102	198	56.6
Schedule Caste	17	11	28	08.0
Schedule Tribe	18	08	26	07.4
Other Backward Casts	59	39	98	28.0
Total	190	160	350	100.0

56.6 percent of the respondents were from the general category. 28 percent of the respondents were from Other Backward Casts. 8 percent of the respondents were from Scheduled Castes and 7.4 percent of the respondents were from the Scheduled Tribes.

From the above table it can be said that equal participation of different castes in NSS is not seen. When we relate the gender of the respondents with their category we can see that in General Category there are more female volunteers (29.14%) than male volunteers (27.42%) in other categories participation of male volunteers is found more than female volunteers.



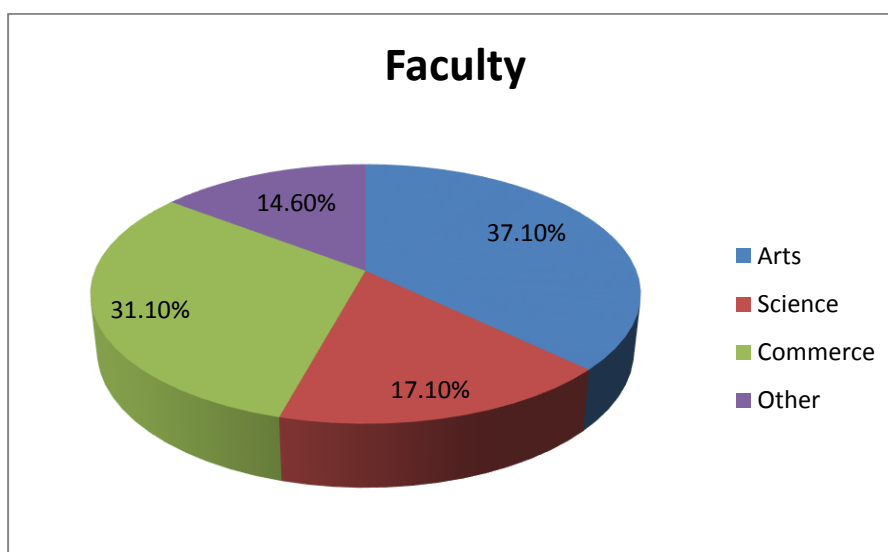
4.1.5. Faculty of the respondents:

4.1.5. The table indicates the Faculty of the respondents

Faculty	Gender		Frequency	Percent
	M	F		
Arts	67	63	130	37.1
Science	51	09	60	17.1
Commerce	50	59	109	31.1
Other	22	29	51	14.6
Total	190	160	350	100.0

It is indicated that 37.1 percent of the respondents were from the Arts faculty. 17.1 percent of the respondents were from the Science faculty. 31.1 percent of the respondents were from the Commerce faculty. 14.6 percent of the respondents were from the other disciplines such as Social Work, Performing Arts etc...

More enrollments of Arts and Commerce students is found (68.28%) in NSS compare to Science, and other disciplines (31.71%). The participation of female students in NSS activities from arts and commerce faculty is more than the participation of male students. Very less female students from Science participate in NSS activities.



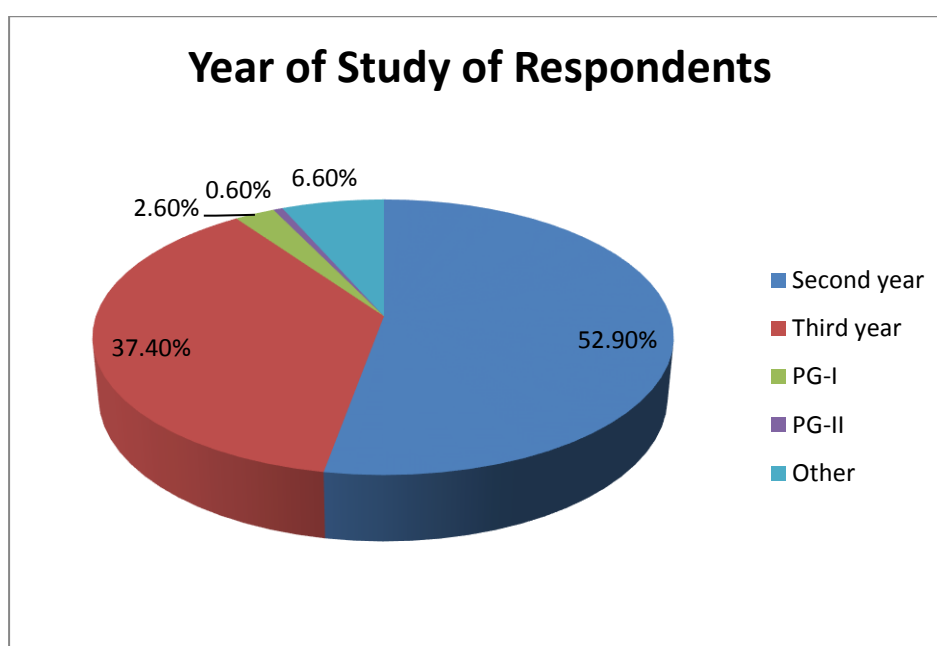
4.1.6. Year of study of the respondents: NSS Volunteers having more than one year of experience in NSS were considered as respondents for the study.

4.1.6. The table denotes the Year of study of the respondents

Year of study	Gender		Frequency	Percent
	M	F		
Second year	92	93	185	52.9
Third year	78	53	131	37.4
PG-I	07	02	09	02.6
PG-II	02	00	02	00.6
Other	11	12	23	06.6
Total	190	160	350	100.0

It is seen that 52.9 percent of the students were in the second year of their graduation. 37.4 percent of the students were in the third year of their graduation. 0.6 percent of the students were in the first year of their Post-graduation. 6.6 percent of the students were in the second year of their Post-graduation.

From the above data it can be said that longer the experience decrease the participation of the students in NSS activities



4.1.7. Education and occupation of the parents of the respondents:

4.1.7.a The table designates the Education of father of the respondents

Education	Frequency	Percent
Illiterate	43	12.3
SSC	112	32.0
HSC	84	24.0
Graduate	57	16.3
Post Graduate	23	06.6
Other	31	08.9
Total	350	100.0

The table indicates the education of the father of NSS volunteers.

It is seen that 12.3 percent of the respondent's father was illiterate. 32 percent of the respondent's father studied up to SSC. 24 percent of the respondent's father studied up to HSC. 16.3 percent of the respondent's father studied up to graduation. 6.6 percent of the respondent's father studied up to Post graduation. 8.9 percent of the respondent's father had studied in other courses.

It is found that majority of the respondents father had studied up to SSC (32%).

4.1.7.b The table illustrates the Occupation of the father of the respondents

Occupation	Frequency	Percent
Farmer	137	39.1
Industrial worker	19	05.4
Teacher	17	04.9
Business	86	24.6
Any other	91	26.0
Total	350	100.0

Respondents were asked about the profession of their father,

It is found that 39.1 percent of the respondent's father was farmer. 5.4 percent of the respondent's father was industrial worker. 4.9 percent of the respondent's father was teacher. 24.6 percent of the respondent's father was involved in Business. 26 percent of the respondent's father was involved in other occupations.

4.1.7.c The table illustrates the Education of the mother of the respondents

Education	Frequency	Percent
Illiterate	82	23.4
SSC	149	42.6
HSC	54	15.4
Graduate	37	10.6
Post Graduate	01	00.3
Other	27	07.7
Total	350	100.0

The table indicates the education of the mother of NSS volunteers.

It is seen that 23.4 percent of the respondent's mother was illiterate. 42.6 percent of the respondent's mother had studied up to SSC. 15.4 percent of the respondent's mother had studied up to HSC. 10.6 percent of the respondent's mother had studied up to graduation. 0.3 percent of the respondent's mother had studied up to Post graduation. 7.7 percent of the respondent's mother had studied in other courses.

4.1.7.d The table explains the Occupation of mother of the respondents

Occupation	Frequency	Percent
House wife	329	94.0
Service	12	03.4
Business	07	02.0
Other	02	00.6
Total	350	100.0

Respondents were asked about the profession of their mother, it is found that 94 percent of the respondent's mother was housewife. 3.4 percent of the respondent's mother was involved in service. 2 percent of the respondent's mother was in business. 0.6 percent of the respondent's mother was involved in other occupations.

4.1.7.e The table illustrates the Annual income of the respondent's family

Annual Income (INR)	Frequency	Percent
< 1 lac	203	58.0
1 to 2 lac	88	25.1
3 to 4 lac	25	07.1
> 4 lac	34	09.7
Total	350	100.0

NSS volunteers were asked about their annual family income. Based on their responses it is found that;

58 percent of the respondents had their Annual family income less than 1 lac rupees. 25.1 percent of the respondents replied that they have their Annual family income between 1 to 2 lac of rupees. 7.1 percent of the respondents said that their Annual family income is between 3 to 4 lac of rupees. 9.7 percent of the respondents replied that their annual family income is more than 4 lac rupees.

Thus from the above data it can be analyzed that lower income students are participating more in NSS and they value more to social service activities.

4.2. RESPONSES OF PROGRAMME OFFICERS

4.2.1 University and gender of Programme officers: 35 programme officers were selected as respondents. 5 respondents were selected from each university.

4.2.1 The table indicates University and gender of the Programme Officers

University	Gender		Frequency	Percent
	M	F		
Gujarat University, Ahmedabad	03	02	05	14.3
Hemchandracharya North Gujarat University (HNGU), Patan	05	00	05	14.3
Krantiguru Shyamji Krishna Verma Kachchh University, Kachchh	01	04	05	14.3
Sardar Patel University, Vallabh Vidyanagar	05	00	05	14.3
Saurashtra University, Rajkot	03	02	05	14.3
The Maharaja Sayajirao University of Baroda, Vadodara	04	01	05	14.3
Veer Narmad South Gujarat University, Surat	03	02	05	14.3
Total	24	11	35	100.0

24(68.57%) male and 11 (31.42%) female respondents were represented as a sample in this study.

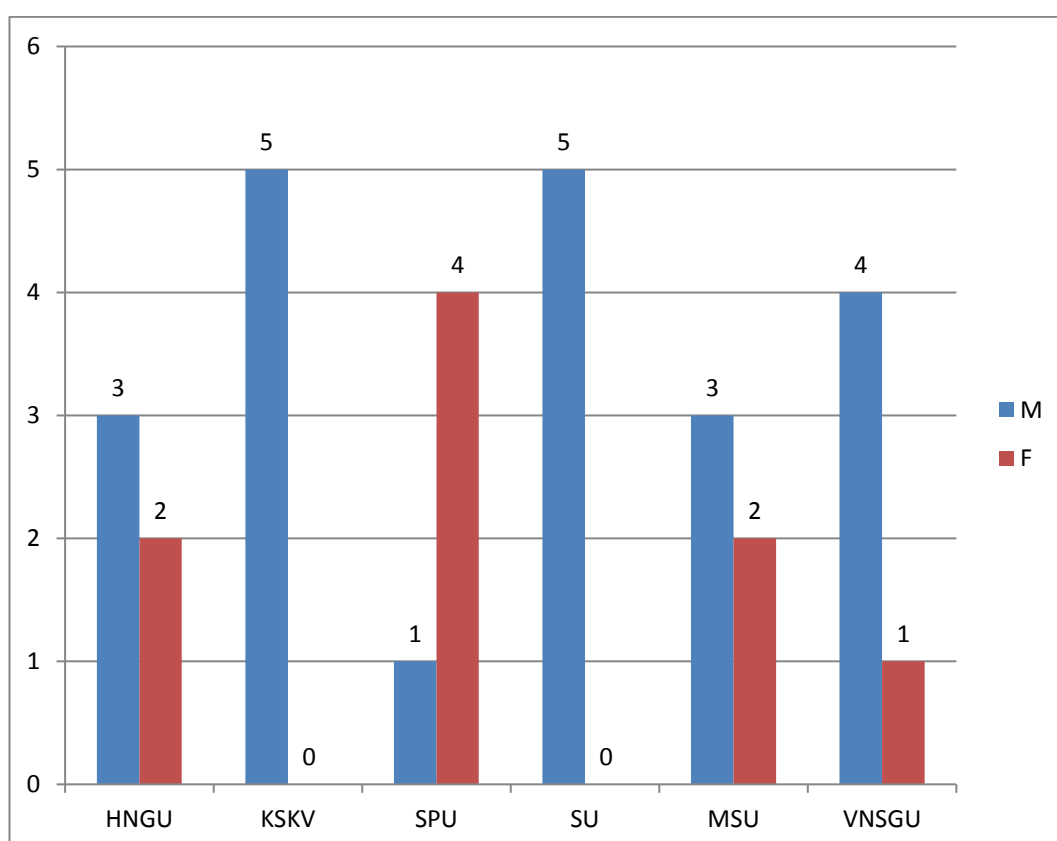
Gender of Programme officers

Male

Out of total respondents 8.57 percent Male Programme officers were from Gujarat University, Ahmedabad. 14.3 percent were from Hemchandracharya North Gujarat University (NGU), Patan. 2.85 percent were from Krantiguru Shyamji Krishna Verma Kachchh University, Kachchh. 14.3 percent were from Sardar Patel University, Vallabh Vidyanagar. 8.57 percent were from Saurashtra University, Rajkot. 11.42 percent male were from The Maharaja Sayajirao University of Baroda, Vadodara. 8.57 percent male were from Veer Narmad South Gujarat University, Surat.

Female Programme officers

Out of total respondents 5.71 percent Female Programme officers were from Gujarat University, Ahmedabad. 11.42 percent were from Krantiguru Shyamji Krishna Verma Kachchh University, Kachchh. 5.71 percent were from Saurashtra University, Rajkot. 2.85 percent male were from The Maharaja Sayajirao University of Baroda, Vadodara. 5.71 percent Female were from Veer Narmad South Gujarat University, Surat.



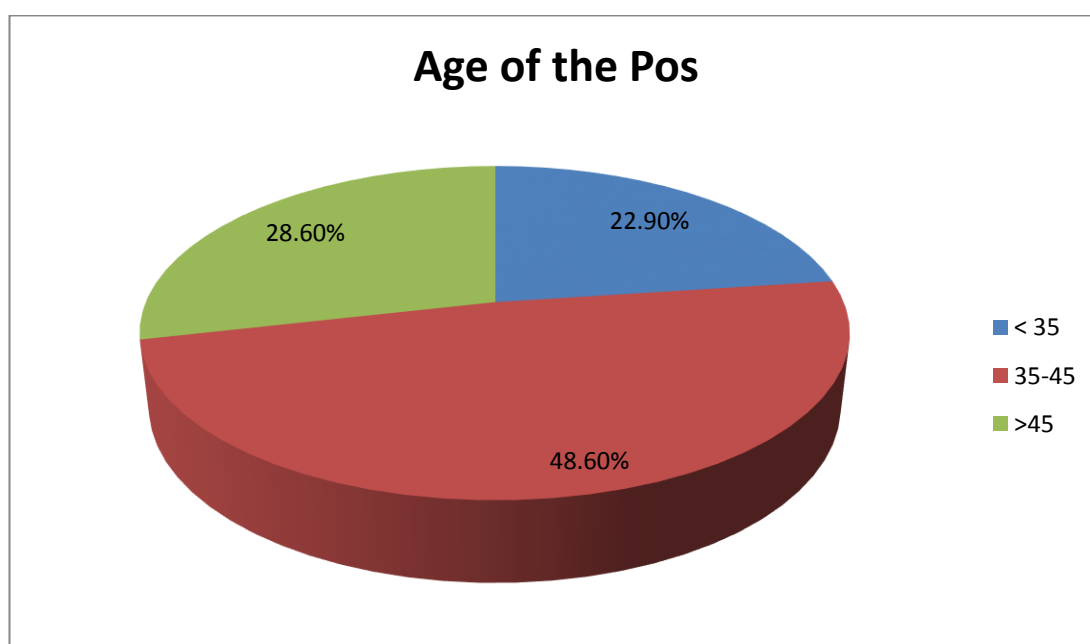
4.2.2. Age of the Programme Officers:

4.2.2. The table indicates the Age of the programme officers

Age (Years)	Frequency	Percent
< 35	08	22.9
35-45	17	48.6
>45	10	28.6
Total	35	100.0

The above table indicates the age of the programme officers of NSS. Least programme officers are less than 35 years of age i.e. 22.9 percent and 28.6 percent of the programme officers are of the age more than 45 years. Whereas, the maximum i.e. 48.6 percent of the programme officers are of the age between 35-45 years of age.

Hence, it can be stated that the programme officers are at the age where the generation gap is in evident and the programme officers could impact better on the NSS volunteers.



4.2.3. Religion of Programme Officers: Cent percent of the Programme officers were of Hindu Religion. Hence, it can be stated that the promotion of the other religion programme officers should be enhanced to bring other religion student's participation. It can also be said that the influence of the religion is significantly seen in NSS activities.

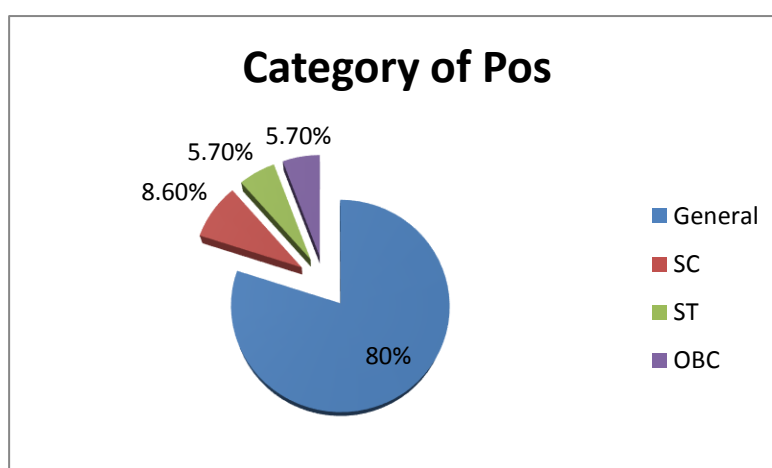
4.2.4. Caste of the Programme Officers:

4.2.4. The table highlights the Caste of the programme officers

Caste	Frequency	Percent
General	28	80.0
Schedule Caste	03	08.6
Schedule Tribe	02	05.7
Other Backward Casts	02	05.7
Total	35	100.0

From the above table it can be stated that majority of the programme officers are from General Caste i.e. 80 per cent and only 8.6 per cent of programme officers belong to Schedule Caste. Whereas the least programme officers are of Schedule Tribe and Other Backward Casts i.e. 5.7 percent each.

Hence, it can be stated that the participation of the Schedule Tribe, Other Backward Casts and Schedule Caste can be enhanced so that the guidance to the same caste students and motivation should be enhanced to bring holistic enhancement of the students and community through NSS.



4.2.5. Experience of the Programme Officers in the institution:

4.2.5. The table shows the Experience of the programme officers in the institution

Years	Frequency	Percent
<5	05	14.3
5-10	10	28.6
10-15	03	08.6
15-20	06	17.1
>20	11	31.4
Total	35	100.0

From the above table it can be predicted that least of the programme officers have 10- 15 years of experience i.e. 8.6 percent. The maximum i.e. 31.4 per cent of the programme officers have less than 20 years of experience.

Hence, it can be stated that the programme officers need good experience and retention of the interest in NSS.

