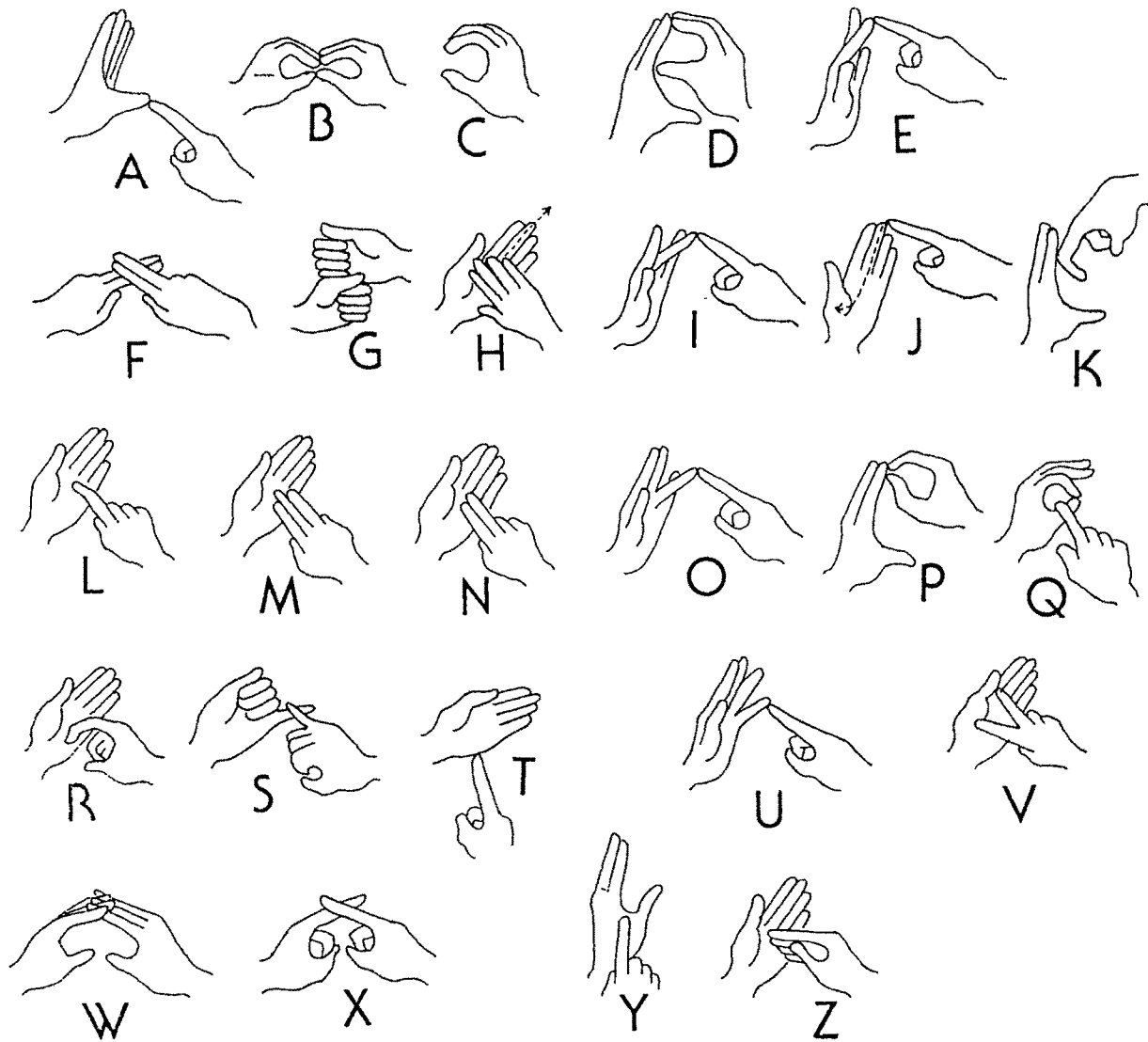


APPENDIX NO: 3

THE STANDARD MANUAL ALPHABET



THIS IS THE TWO-HANDED ALPHABET USED FOR FINGER SPELLING TO THE SIGHTED DEAF IN GREAT BRITAIN AND MANY PARTS OF THE WORLD. EACH SYMBOL FORMS, OR AT LEAST SUGGESTS THE LETTER IT REPRESENTS.