

## APPENDIX V

## ACHIEVEMENT TEST

Full Marks : 60

## Section I

- I. Check the correct answer to the following statements.
1. The term 'pre-school child' refers to children from\_\_\_\_\_.  
(a) birth to two years.  
(b) birth to six years.  
(c) two to six years.
  2. The growth pattern of a child will depend on his size at\_\_\_\_\_.  
(a) birth.  
(b) two years.  
(c) six years.
  3. During pre-school years, head growth is\_\_\_\_\_ chest growth.  
(a) similar to  
(b) faster than  
(c) slower than.
  4. During pre-school years limb growth is\_\_\_\_\_ trunk growth.  
(a) similar to  
(b) faster than  
(c) slower than.

5. Fabrics for undergarments should be \_\_\_\_\_  
(a) loosely woven  
(b) firmly woven  
(c) tightly woven.
6. To draft a child's basic block, one needs to know the \_\_\_\_\_ and \_\_\_\_\_.  
(a) head girth.  
(b) chest girth.  
(c) neck to waist level.  
(d) shoulder to shoulder.  
(e) highest shoulder to waist level.

II. Complete the following statements by filling the blanks.

1. An average new born baby is \_\_\_\_\_ cm long and weighs about \_\_\_\_\_ kg.
2. The quality and quantity of a child's wardrobe will depend upon the \_\_\_\_\_ of this parents.
3. Children feel a sense of belonging if their clothes are \_\_\_\_\_ to those of their playmates.
4. Clothing with \_\_\_\_\_ features will help the child to become independent in dressing and undressing.

5. Independence in dressing and undressing will build up \_\_\_\_\_ in the child.
6. Besides modesty and protection, clothes for the pre-school child should also provide\_\_\_\_\_.
7. Children's garments should be free of devices that may cause \_\_\_\_\_.
8. Draw-strings are dangerous and should be \_\_\_\_\_.

III. Give reason for the following statements in about two lines.

1. Pre-school children should have few garments.
2. Clothes for pre-school children should be strong and sturdy.
3. Children's garments should have wide hems.
4. Cotton is the most suitable fabric for children's garments.
5. Overall and long-sleeved jackets should be made from firmly woven materials.
6. Most garments for pre-school children should hang from the shoulders.
7. Children's garments should have a good fitting.
8. Elaborate trimmings are not suitable for pre-school children's garments.
9. Preschool children outgrow their garments very quickly.
10. Garments should be replaced as soon as they start becoming tight.

IV. Answer the following questions very briefly.

1. If you have to buy a fabric for pre-school child's garment, what sort of material would you select ?
2. Which portions in a preschool child's garments need reinforcement and how can it be done ?
3. What should be the percentage of polyester and cotton in a blend fabric for pre-school children ?
4. What are growth features ?
5. Which two growth features would you include in a child's garment to make it longer and two features to make it wider when required ?
6. What are self-help features ?
7. Which four self-help features would you include in a child's garment to help the child become independent ?
8. What are the functions of suitable clothing ?
9. Why is the selection of "suitable clothing" so important for the pre-school child ?
10. What are the factors that influence the planning of a child's wardrobe ?

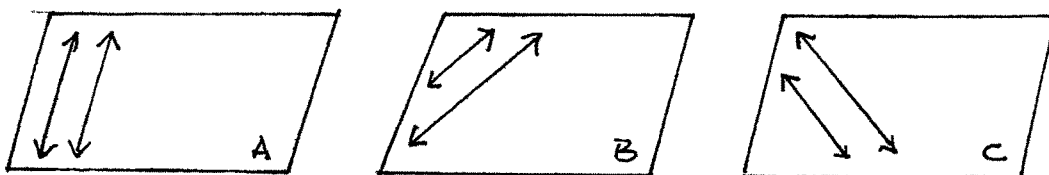
## Section II

Choose the correct answer.

1. While laying the pattern pieces on the fabric the big arrow mark should be placed parallel to the \_\_\_\_\_ grain of the fabric.

A. Lengthwise.                      B. Crosswise/widthwise.

2. Which of the following illustrations has arrows showing the correct way to pull a fabric to make it on grain.



A.

B.

C.

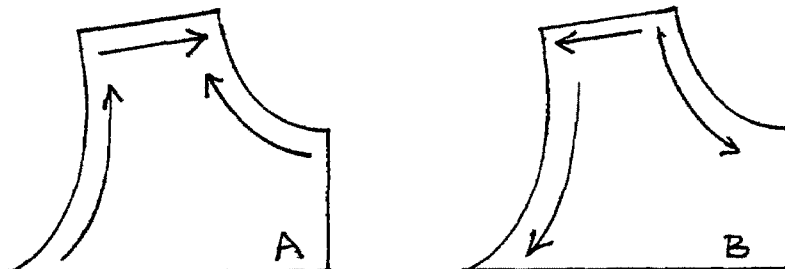
3. Which of the following steps would you follow to prepare your fabric for cutting a garment that will be on grain and hang correctly ?

A. Straighten edges.  
 B. Pull the fabric to straighten the crosswise threads.  
 C. Fold the fabric on the lengthwise grain.  
 D. Both A and B.

4. The line for staystitching will be :

A. Near the seam line towards the pattern piece.  
 B. Near the seam line towards the cut edge.  
 C. On the seam line.

5. Which illustration shows the correct direction for staystitching ?



- A.  
B.
6. When a curved edge, for example, armscye or neckline, is to be finished with a bias facing, the seam allowance must be \_\_\_\_\_ to get a smooth flat finish.
7. When bias binding is attached to a neckline, the bias has to be \_\_\_\_\_ to have flat well finished neckline.  
A. Pulled.                      B. Kept slack.
8. While pinning up pieces, the pins should be \_\_\_\_\_ to the edge.  
A. Parallel.                      B. Perpendicular.
9. While attaching a plain piece to a gathered edge, the gathered piece should be placed \_\_\_\_\_.  
A. On top.                      B. below.

10. The correct direction for stitching the shoulder seam is \_\_\_\_\_.
- A. from arm hole to neckline.
  - B. from neckline to armhole.
11. Vertical buttonholes should be placed \_\_\_\_\_
- A. near the edge of the opening.
  - B. on the centerfront line.
12. Buttons should be stitched \_\_\_\_\_
- A. near the edge of the opening
  - B. on the centerfront line.