

## Appendix-2

### Pictorial-views of textured yarn (Group: A)

#### (a) Tube Knitting and Dyed Hoses

##### I: Pre-twist = 2 tpi

(a) Sample A1



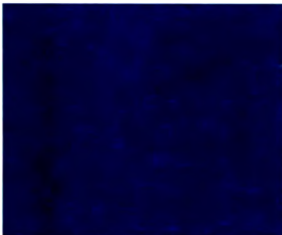
(b) Sample A2



(c) Sample A3



(d) Sample A4



##### II: Pre-twist = 4 tpi

(e) Sample A5



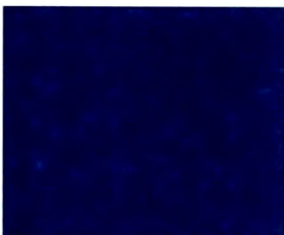
(f) Sample A6



(g) Sample A7

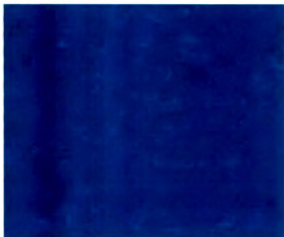


(h) Sample A8



**III: Pre-twist = 6 tpi**

(i) Sample A9



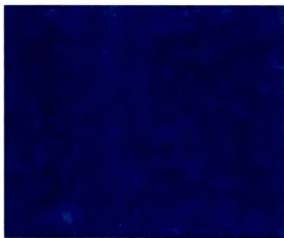
(j) Sample A10



(k) Sample A11

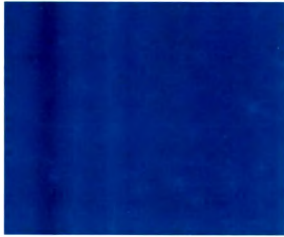


(l) Sample A12



**IV: Pre-twist = 8 tpi**

(m) Sample A13



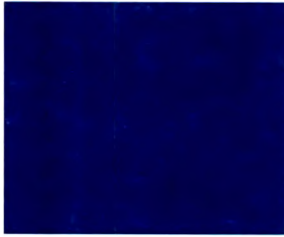
(n) Sample A14



(o) Sample A15



(p) Sample A16

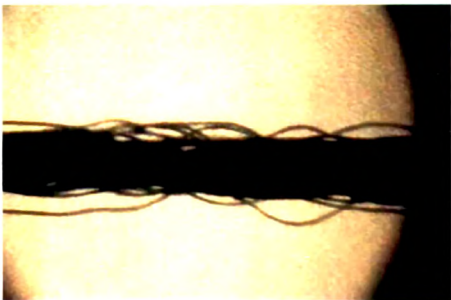


**b) Microscopical Views:***I) Pre-twist = 2 tpi*

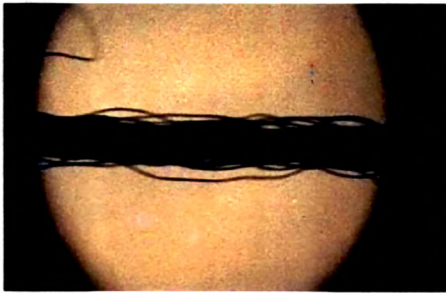
**Sample A1**



**Sample A2**



**Sample A3**

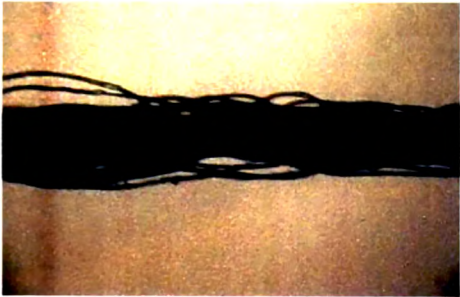


**Sample A4**



*II) Pre-twist =4 tpi*

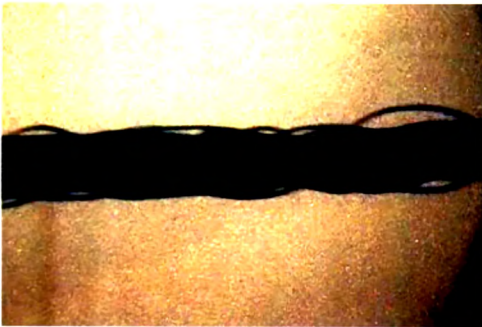
**Sample A5**



**Sample A6**



**Sample A7**



**Sample A8**





III) Pre-twist = 6 tpi

**Sample A9**



**Sample A10**



**Sample A11**



**Sample A12**



iv) Pre-twist = 8 tpi

**Sample A13**



**Sample A14**



**Sample A15**



**Sample A16**

