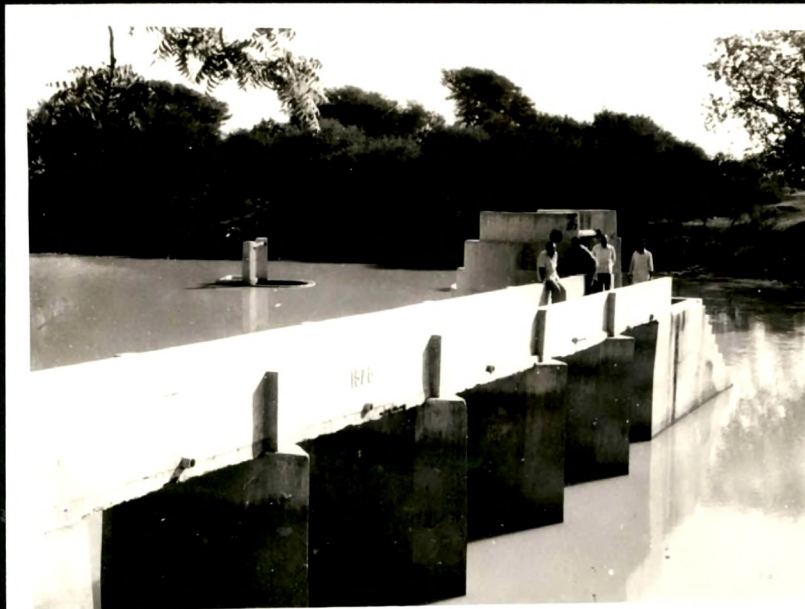


LIST OF PLATES

1. Seepage well in the centre of the tank and along the bund (village Panchpipla).
2. Field with Gujarat Cotton - 11 crops (village Panchpipla)
3. Jowar field (village Vad)
4. Reclaimed creek area (village Madafar).
5. Padtar (cultivable waste) with grazing animals in the background (village Kalak).
6. Barren uneven land (village Kundhal).
7. Kharland with salt encrustation (village Khanpur Deh).
8. Alternate rows of cotton and wheat (village Thakor Talavdi)
9. Rows of Cotton-Castor and Wheat (village Thakor Talavdi)
10. Tur and cotton rows (village Limaj).
11. Jowar and Tur rows (village Limaj).
12. Cotton field near Bhadkodara and Malpur.
13. A tank with seven seepage wells (village Nada).
14. Barn (Khali) village Mahapara.
15. Gaucher (Pasture land) at village Kava.
16. Innundation of Kharland by the ingress of sea water (village Zamdi)
17. Luni grass near the coast (village Zamdi)
18. Dry tank of village Chandpur Marva.
19. Water logging (village Salehpur Sangdi)
20. Silting of the Gulf of Cambay off the Mahi estuary near Dehgam.



1 - Seepage well in the centre of the tank and along the bund (village Panchpipla)



2 - Field with Gujarat Cotton-11 crop (Village Panchpipla)



3 - Jowar field (village Vad).



4 - Reclaimed creek area (village Madafar).



5 - Padtar (cultivable waste)
with grazing animals in the
background (village Kalak).



6 - Barren uneven land (village
Kundhal)



7 - Kharland with salt encrustation (village Khanpur Deh).



8 - Alternate rows of cotton and wheat (village Thakor Talaodi).



9 - Rows of Cotton-Castor and
Wheat (village Thakor
Talaodi).



10 - Tur and cotton rows (village
Limaji).



11 - Jawar and Tur rows (village
Limaaji).



12 - Cotton field near Bhadkodara
and Malpur.



13 - A tank with seven seepage wells (village Nada).



14 - Barn(Khali) Village Mahapura



15 - Gauchar (Pasture land) at
Village Kava



16 - Innundation of Kharland by
the ingress of sea water
(village Zamdi).



17 - Luni grass near the coast
(village Zamdi)



18 - Dry tank of village Chandpur
Marva.



19 - Water logging (village
Salehpur Sangdi).



20 - Silting of the Gulf of
Cambay off the Mahi estuary
near Dehgam.