

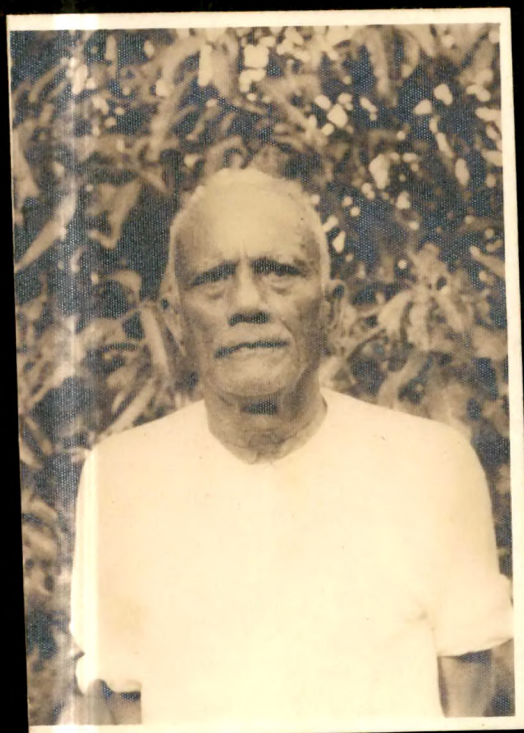
MAPS, CHARTS, TABLES and
ILLUSTRATIONS .

				<u>Pages</u>
Maps	12 & 32
Charts	62, 78, 82 and 138
Tables	36, 42, 74, 77, 116, 119, 140, 145, 149, 152, 153, 156, 158, 171, 177, 225, 257 and 265
Photographs	1, 38, 130, 131, 132, 141, 142, 198, 212, 221, 236, 239 and 241



1. One of the big land-owning cultivators and a leading Anavil of Haria, Gulabbhai Makanji Desai, is over sixty; but still plays active part in agricultural activities. He is a matriculate and holds the position of Chairman in three institutions, viz. Pardi Peoples' Co-operative Bank, Education Trust Managing Pardi Secondary School affairs and The Southern Gujarat Fruit and Vegetable Growers' Association. He has been snapped when he was at work in his afus-orchard.

2. An Anavil young woman. She has passed S.S.C. Examination and is married to a double-graduate of a neighbouring village. Note the modern style of dress and golden necklace she wears.



2