

APPENDIX-IILIST OF PLATES

PLATE I A	-	Old Levee surface
I B	-	Old Levee surface
PLATE II A	-	Pediment surface
II B		Badland surface
PLATE III A	-	Old Levee surface
III B	-	Old Levee surface
PLATE IV A	-	Flood plain surface
IV B	-	Flood plain surface
PLATE V A	-	Flood plain surface
V B	-	Flood plain surface
PLATE VI A	-	Old Levee surface
VI B	-	Old Levee surface
PLATE VII A	-	Sand dune surface
VII B	-	Sand dune surface
PLATE VIII A	-	Old Levee surface
VIII B	-	Old Levee surface.

PLATE- I

Photograph A

OLD LEVEE SURFACE

North-south oriented remnant of levee sand,
4 m thick section exposed to the east of Valam.

Photograph B

OLD LEVEE SURFACE

Two levels of levee, 6m thick section exposed
on the Rupen nadi bank to the east of Valam.
Upper levee consists of brown alluvial clayey
sand and lower levee consists of calcareous,
kankary clayey sand.

PLATE - I



A



B

PLATE II

Photograph A

PEDIMENT SURFACE

North-south oriented sand dunes of 5m high over a cut terrace surface exposed near Ransipur. An irrigation canal follows the terrace edge.

Photograph B

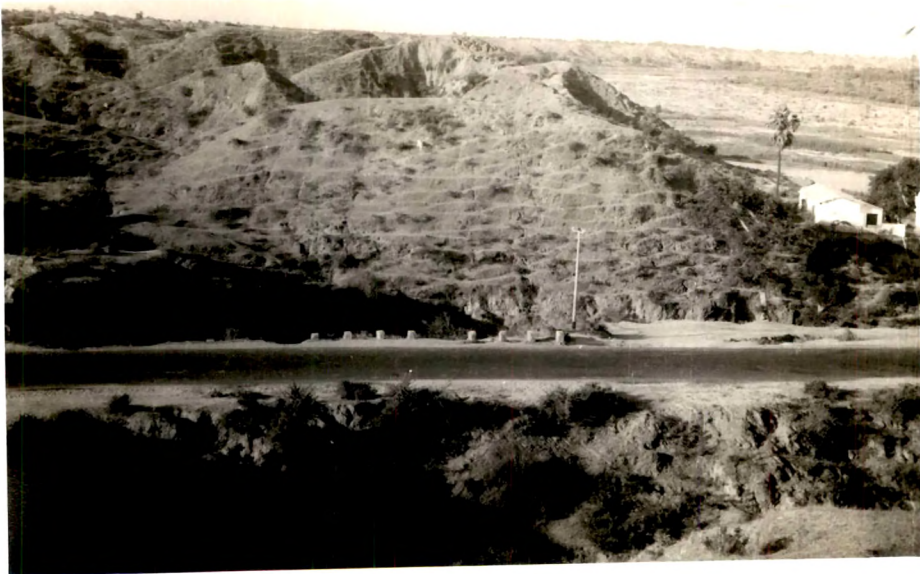
BADLAND SURFACE

Badland erosion developed over 15 m high river bank consisting of gravels and alluvial clays, exposed on the western bank of Sabarmati river to the east of Vijapur.

PLATE - II



A



B

PLATE III

Photograph A

OLD LEVEE SURFACE

Northeast-southwest oriented levee road cutting of 5 m height across the Mehsana-Vijapur road to the east of Udalpur.

Photograph B

OLD LEVEE SURFACE

Northeast-southwest oriented remnant of levee sand of 5 m height near Jilosan.

PLATE - III



A



B

PLATE IV

Photograph A

FLOODPLAIN SURFACE

Deep cut river section (10 m high) exposing 3 levels of floodplain deposits in the Pushpawati nadi to the south of Gorad village. Horizontal, laminated recent sands in the river bed to the foreground.

Photograph B

FLOODPLAIN SURFACE

Deep cut river section (7 m high) exposing 3 levels of floodplain deposits on the western bank of Pushpawati nadi near Gorad.

PLATE - IV



A



B

PLATE V

Photograph A

FLOODPLAIN SURFACE

Levels indicating floodplain and river bed facies are seen at a height of 5 m on the western bank of Khari nadi to the west of Jhiliya.

Photograph B

FLOODPLAIN SURFACE

Alternating coarse grained river bed facies with fine grained floodplain facies punctuated with thin black clays sheets at a height of 10 m are seen in the Khari nadi section near Kunsagar.

PLATE - V



A



B

PLATE VI

Photograph A

OLD LEVEE SURFACE

Overview from top of the levee (104 hill) near Mitha towards east. Picture shows the contrast between the levee surface and the lower alluvial silt and clay surface.

Photograph B

OLD LEVEE SURFACE

Gulleyed patterns in the levee (104 hill).

PLATE - VI



A



B

PLATE VII

Photograph A

SAND DUNE SURFACE

6 m high fossilised sand dunes over the eroded badlands in the river section near Teniwada.

Photograph B

SAND DUNE SURFACE

Gebi Timba fossilised sand dune hill complex near Detroj. Crop in the foreground.

PLATE - VII



A



B

PLATE VIII

Photograph A

OLD LEVEE SURFACE

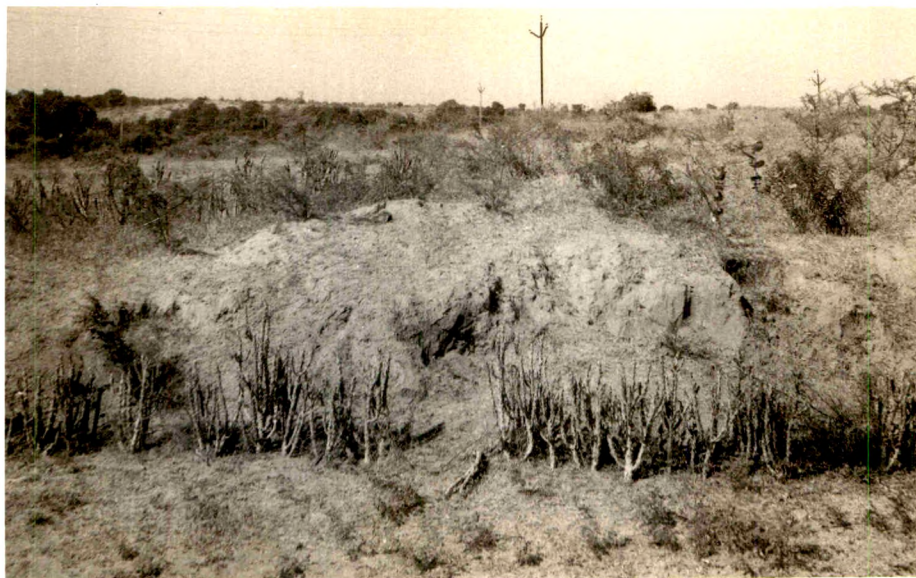
6 m high levee hill complex near Akhaj.

Photograph B

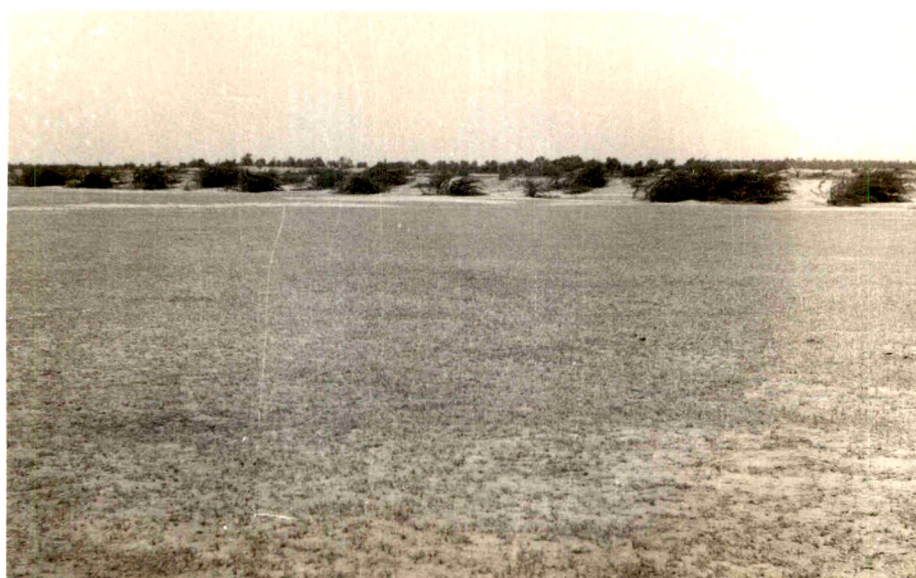
SWAMP SURFACE

Salty creek, dessicated plain near Hansalpur,
south of Bechraji.

PLATE - VIII



A



B