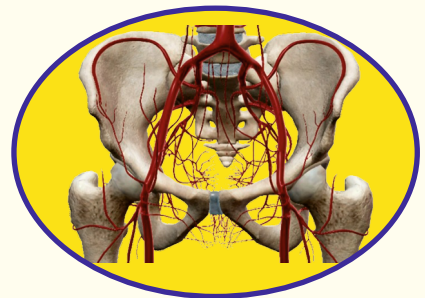




# **AIM & OBJECTIVES**



**AIM OF THE STUDY**

The aim of the study was to describe the morphometric & morphological features of internal iliac artery and to describe the origin & anatomical variations of individual branches of internal iliac artery like obturator artery, superior vesical artery, iliolumbar artery, inferior gluteal artery, internal pudendal artery & middle rectal artery.

**OBJECTIVES:-**

Objectives of the present work are:

- To identify the vertebral level of origin of internal iliac artery & measure the distance of origin from midsagittal plane.
- To measure the length & caliber of the artery.
- To describe the course & relation of internal iliac artery.
- To determine the level & mode of termination of internal iliac artery.
- To find out the branching pattern of internal iliac artery & classify it according to Adachi's classification.
- To describe the origin of obturator artery.
- To determine the origin of iliolumbar artery.
- To find out the origin of inferior gluteal artery.
- To locate the origin of superior vesical artery

- To detect the origin of internal pudendal artery.
- To identify the origin of middle rectal artery.
- To find out & report anatomical variations associated with internal iliac artery & its branches.
- To compare data with other similar studies.