

## **PHOTOGRAPHS OF FRINGE AREA**



***1.1 & 1.2 Dwarf stunted vegetation with horizontal growth of branches***



***1.3 Cropland***



***1.4 Grassland***



***1.5 & 1.6 Croplands being irrigated either through surface or ground water***





**2.1 & 2.2 Depressions that gets filled up by rain water during rainy season**



**2.3 Partially uprooted shrub due to flood**



**2.4 Site of Jinjwada port during 13<sup>th</sup> Century, now laying along South-Eastern fringe**



**2.5 Collection of Sample from soil profile erosional work along the fringe**



**2.6 Spasmodic**





**3.1 Lower roads are made to allow easy surface runoff**  
**eastern fringe**



**3.2 Washed away road along the south-**



**3.3 Mud flakes over the flood plain of river Rupen**  
**southern fringe**



**3.4 Sand mining in the river bed,**



**3.5 Sandstone mining, Nort-West of Dhrangdhara**



**3.6 Slender leaves of vegetation**





**4.1 Dried grassland, Southern fringe,  
North of Krishnanagar**



**4.2 Cattle being led to the pasture land**



**4.3 & 4.4 Shepherds and Nomads with their herd**



**4.5 Firewood collection**



**4.6 Charcoal being made**





**5.1 Charcoal for sale**



**5.2 Salt pyramid**



**5.3-5.6 Salt being collected, accumulated in heaps, washed and then packed for further processing**



## **DRY RANN ( EASTERN & CENTRAL PART )**



***6.1-6.4 Development of cracks on the Rann floor, size of crack depends upon percentage of clay***



***6.5 Wild Ass  
Eastern fringe area from the Rann***



***6.6 View of***





**7.1 Desolate dry Rann**



**7.2 Dry channel amidst Rann**



**7.3 Minor depressions on the flat Rann**



**7.4 Tufts of grasses growing in the fringe**



**7.5 Brine deposits on the Rann surface  
Gagodar**



**7.6 Vegetation along the Western fringe,**





**8.1 & 8.2 Eastern part of the Little Rann of Kutch during dry period**



**8.3 Isolated shrubs along the boundary of Rann bed which pour into the Rann**



**8.4 Dry stream**



**8.5 Hallucinatory Rann**



**8.6 Wind blown fine sediments, Kharghoda**



## **WESTERN WET RANN**



**9.1-9.6 Creeks with insignificant halophytic vegetation, west of Surajbaari Bridge**

**PLATE-9**





***10.1-10.4 Standing water in the salt pans, vegetation almost absent because of higher salt content in the area***



## **BET/ ISLAND**



**11.1** *Water regulation through bunding on Jhilandan bet*



**11.2** *View of Rann & fringe from Jhilandan bet*



**11.3** *Jinanand Kundas (14<sup>th</sup> -15<sup>th</sup> Century) Bunds,*



**11.4** *Rills along the inner slope of*

*showing extent of erosion*



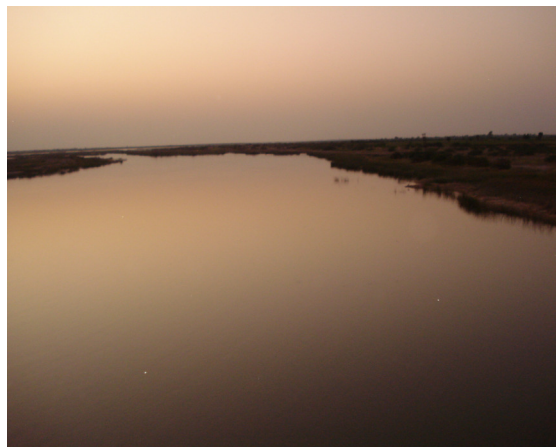
**11.5** *Jhilandahan bet showing steep slope upward leaving behind from the footzone. sandstone rocks*



**11.6** *Soil being washed away fragments of basaltic and*



**12.1-12.6 STREAMS JOINING RANN FROM  
EASTERN FRINGE**



**PLATE-12**



**13.1-13.6 STREAMS JOINING RANN FROM SOUTHERN FRINGE**



**PLATE-13**



## **SHALLOW AND WIDE RIVERS JOINING RANN**



**14.1 North of Bajana**



**14.2 River Rupen**



**14.3 & 14.4 Sandstone river bed around Dhrangdhara**



**14.5 & 14.6 Wide channel, near Jesara**



## **LAKES & RESERVOIRS**



**15.1 Jenabad**



**15.2 Saulas**



**15.3 Vanod**



**15.4 South-West of Vishnagar**



**15.5 Bajana**